

# GILL RED ANGUS



*Spring Bull & Female Sale*

# APRIL 22, 2026

1:00 PM MT At the Ranch Near Timber Lake, SD



*Selling*

- Pick of 2026 Heifer Calves
- 40 Coming Yearling Bulls
- 60 Age Advantage Bulls
- 180 Commercial Replacement Heifers



Spring Bull & Female Sale

# APRIL 22, 2026

1:00 PM MT  
At the Ranch  
Timber Lake, SD

[www.GillRedAngus.com](http://www.GillRedAngus.com)

## RANCH HEADQUARTERS

Gill Red Angus  
13138 256th Ave.  
Timber Lake, SD 57656  
[www.gillredangus.com](http://www.gillredangus.com)

## MARKETING, BUSINESS & COW HERD MANAGER

Bryan & Kristen Gill  
Cell • 701-730-0134  
E-Mail: [bigredgenetics@hotmail.com](mailto:bigredgenetics@hotmail.com)

## RANCH MANAGER

Brent & Emily Gill  
Cell • 605-848-3722

## SALE DATE & TIME

Wednesday, April 22, 2026 • 1:00 p.m. MT

## SALE LOCATION

Gill Red Angus sale facility • On the ranch  
Timber Lake, South Dakota

## DIRECTIONS TO SALE

Gill Red Angus Ranch is located 120 miles south of Bismarck, ND, 34 miles west of Mobridge, SD and 6 miles east of Timber Lake, SD.

**If traveling east from Timber Lake:** Go 6 miles on Highway 20 to ranch turnoff. Turn left, go north 1.5 miles. Turn left, go west ½ mile.

**If traveling west from Mobridge or Bismarck:** From Highway 63 and Highway 20 Junction, go 8.5 miles west to ranch turnoff. Turn right, go north 1.5 miles. Turn left, go west ½ mile.

## ACCOMODATIONS

Timber Lake, South Dakota  
The Limit Lodge – 1-605-865-3526  
Mobridge, South Dakota  
Wrangler Motor Inn • 605-845-3641  
Grand River Casino • 800-475-3321

## LUNCH

Steaks are provided by Dacotah Bank of Aberdeen. Crop 1 Insurance will be grilling the steaks.

## VIDEO

A video of each lot will be on both [www.dvauction.com](http://www.dvauction.com) and [www.gillredangus.com](http://www.gillredangus.com). The sale will be a video sale. The bulls & heifers will not be run through a sale ring, but instead of a sale ring, several big screen TV's will be displayed throughout the sale barn and a video of each bull will be displayed when each lot is being sold.

## AUCTIONEER

Seth Weishaar 605-210-1124

## RINGMEN

Donnie Leddy • Cattle Business Weekly  
605-695-0113  
Scott Dirk • Tri-State Livestock News  
605-380-6024  
Kirby Goettsch • Farm & Ranch Guide  
605-380-3939

## BUYER REPRESENTATIVES

Rusty Williamson • Williamson Land and Cattle,  
Moorcroft, WY 307-756-2426

*Buyers unable to attend sale may have their bid represented by contacting the auctioneer, one of the buyer representatives, the marketing manager or Gill Red Angus.*

## RED ANGUS ASSOCIATION

Elizabeth Caskey, Commercial Marketing  
Specialist 706-513-4951

## SALE CATALOG

The Cattle Business Weekly, Philip, SD  
605-859-2022 • [cattle@gwcc.net](mailto:cattle@gwcc.net)  
[www.cattlebusinessweekly.com](http://www.cattlebusinessweekly.com)

## SALE VETERINARIAN

Oahe Vet Clinic, Mobridge, SD • 605-845-3634

## SALE ORDER

Cattle will sell in catalog order, but are subject to change on sale day.

## INSPECTION OF BULLS

Bulls can be viewed anytime prior to sale date.  
Heifers can be viewed any time after April 10.

## LOT TAGS

Ear tag numbers on the sale cattle will correspond to the sale catalog.

## RETAINED SEMEN INTEREST

We are retaining ¼ semen interest in every bull selling unless otherwise specified. Buyer gets ¾ interest, full possession and full salvage value. This reserves us the right to collect semen on any bull in the sale at the buyer's convenience.

## HEALTH, VACCINATIONS, & REQUIRED TRICH TESTING

At Gill Red Angus we maintain a consistent mineral and vaccination program. From birth to weaning, our calves receive their necessary vaccinations and remain on vitamins and minerals to aid in maintaining health as they grow. These bulls have also been poured prior to pasture and receive an oral dewormer when coming home as well as being poured again for lice.

## NO LOAD OUT AFTER DARK ON SALE DAY

## SALE TERMS & CONDITIONS

Any terms and conditions not covered by the catalog will refer to the Standard Terms & Conditions set forth by the Red Angus Association of America.

## GILL RED ANGUS GUARANTEE

All bulls that are in good breeding condition at the beginning of the first breeding season are guaranteed breeders. This does not include any injury. Any bull that settles one third or more of the healthy cows he services or passes a fertility test made by a competent veterinarian during the first six months after the sale date is considered a good breeder. All claims for adjustment or refund must be made within six months of sale date. All bulls returned must be in good and healthy condition. Any bulls given a fertility test within the first six months after the sale date will be at the buyer's expense. All bulls are guaranteed to be breeders, however, no guarantee is given that the semen collected from a bull will freeze.

## INSURANCE

An injury and mortality insurance is available on all bulls. Insurance is available through Ray Trudeau of Martin-Trudeau Insurance - 605-770-5170.

This sale will be broadcast live online at

**DVAuction**  
Broadcasting Real-Time Auctions  
Real time bidding & proxy bidding available.

For more info about bidding online with  
[DVAuction.com](http://DVAuction.com), check out Page 7 & 29.



# The Gill Red Angus Customer Marketing Program

*"You Buy Our Bulls, We Will Bid on Your Calves"*

Something that sets us apart from most of our competition is our Customer Service Program. Our slogan is "You buy our bulls and we will bid on your calves." This has really helped our customers on selling day. We have run replacement heifers up as much as \$15 per hundred weight! Add that up on a load of 525 lbs replacement heifers and that is an extra \$7,500 in your pocket. Compare that to what is offered by other seed stock producers, how can you go wrong?

#### Here is how it works:

- ✓ First you must be a Gill Red Angus customer. At marketing time, contact Gill Red Angus with the marketing option you wish to pursue:
  - Complete Retained Ownership
  - Partial-Partnership Retained Ownership
  - Livestock Auction or Off-the-Farm Marketing - Sell your calves off-the-farm or at the stockyards and a Gill staff member will be there to place a bid on them for you.
  - Discounted semen available to all customers who want to AI.
- ✓ When possible, we will work with our customers to help form co-mingled loads of calves. Upon harvest, if possible, Gill Red Angus will prepare a report, complete with feed yard and harvest data, for your use.
- ✓ We are also available for consultations regarding breeding, replacement heifer procurement, and all marketing options. We will help you in any way we can to make your bottom dollar grow.

*"You Buy Our Bulls, We Will Bid on Your Calves"*



## Hello Friends,

Welcome to our annual Spring “You Buy Our Bulls, We’ll Bid on Your Calves” Bull and Commercial Open Replacement Heifer Sale.

It’s sure a good time to be in the ranching business. Markets are strong, the cow herd heading into 2026 is smaller than a year ago, and we’re running with the tightest numbers we’ve seen since 1951. Since supply is short and demand is strong, I believe we’ve got a good couple years at least.

Our bulls have been developed the right way — slow and steady. The coming two-year-olds and fall-born bulls ran out on grass all summer. After we weaned the yearlings, we turned the whole set out together in the pasture just south of the sale barn. They were fed a balanced ration, but they still had grass under their feet, a dam to drink from, and plenty of country to travel. They came into the feedlot around Christmas, where we sorted them back into age groups and fed them according to their needs. We believe in growing bulls out, not pushing them — building longevity, soundness, and real-world performance into them from the start.

The heifers were purchased this past fall at weaning from our bull customers — cattle we know and programs we trust. They’ve been sorted hard for quality, Bangs vaccinated, and received their breeding vaccinations. We’ve been offering these replacement heifers for several years now, and the feedback from past buyers has been outstanding. They should weigh 800 pounds or better by sale day, and we’ll have updated weights available then.

As a highlight, we are offering an exciting opportunity to select a “Pick of the Herd Heifer Calf”, representing the very best of our program’s genetics from past pedigrees and future potential. This special offering allows the buyer to choose from our entire 2026 born spring heifer calf crop which has been carefully bred for performance, maternal strength, structural soundness, and the proven Red Angus quality that our program has been built on. Don’t miss the chance to take home an elite female backed by strong pedigrees and the kind of genetics that will move a herd forward.

We take a lot of pride in raising the best cattle possible while having the top customer service in the industry. We do all we can to make your calves reach their full value on sale day! Our goal is simple: provide seed stock that helps move your commercial operation forward and put more dollars in your pocket.

We’d sure like to see you on sale day — whether that’s in person, on the phone, or online through DVAuction. If you have any questions at all, don’t hesitate to call. We enjoy talking cattle.

See you sale day,

## The Gill's



**Brent and Bryan**



**Larry and Janet**

Visit Our Website [www.gillredangus.com](http://www.gillredangus.com)

A video of each bull is available on the website

# GILL RED ANGUS DELIVERY

**We will start delivering bulls directly after the sale. All of the heifers and cows will be shipped right after the sale. The trucking for the females will be at the buyer's expense.**

We will continue to deliver bulls for free if you are from ND, SD, NE, and parts of MN, WY, and MT. (See map for details) We will deliver with both a semi and a stock trailer. If possible, we will deliver to your ranch, but it's not always possible, especially if we use our semi. So in those times, we ask that we meet you at "central points", like a sale barn.

For all other states, here are our delivery charges. We will charge \$150 per head for the first 450 miles, and for every hundred miles after that, it's an additional \$100 per head. Depending on the situation, we may ask you to meet us along the way. Also, if we have a trailer load of bulls going to the same area, the delivery charges will be adjusted less.



# 180 Head of Commercial Open Replacement Heifers



We purchased this group of heifers last fall from a few of our top customers with the intention of putting them in this sale. They are very feminine, easy fleshing, long and deep bodied and will make an excellent set of cows. They were palpated to make sure they are open and able to breed. We will weigh them mid-April and that weight will be available before the sale. They should be weighing around 800 to 850 lbs by sale day. They were fed at the Jerry Kaup feedlot near Tolstoy, SD where he fed them a high roughage 42 megacal ration to grow slow over the winter. They will be ready to breed as soon as you get them home. With the high-priced feeder cattle and kill cows that we are currently witnessing, the bred cattle market this fall just might reach a level we have never seen before. Get in on the ground floor and invest in some great heifers with outstanding genetics behind them.



# Pick of 2026 Born Heifer Calves

Gill Red Angus purchased their first registered female 47 years ago in 1979. Over the years we have purchased and AI'd to the best bulls that we thought would move our program forward with every calf born. We have had a huge impact throughout the country in some of the best commercial ranches across the United States as we sell around 250 bulls annually. We feel our herd is ready to be opened up to the seed stock world as a "Pick of the heifers". We will have around 600 registered calves being born this spring, including embryo, AI, and natural born calves. We have never offered a "Pick" of our heifers before. Where else can you go to choose from a group this large and from a breeder who has been at it for 47 years! You can come sometime over the summer and see the calves on grass with their mothers to narrow your decision down. We will wean the calves in late October, take their DNA and once the DNA is back, you can then make your final choice on the heifer. This is a great opportunity for a beginner or a long time breeder. If you truly want to take your program to the next level, this is the choice you need to seriously look at! Some of the AI sires we used last year include PIE Cadillac, ALC Remedy, HRP Jumpstart (Bieber Jumpstart by CBAR Abigrace 636D, the high selling bull at Hansine in 2025 at \$40,000), Andras Masterclass (2025 high selling bull at Andras Stock Farm at \$38,000 who is a Thomas Jefferson 55602 grandson), WSM Playmaker (PIE Quarterback by Bieber Primrose), Feddes Eastwood 3284, and the embryo sires include 9 Mile Franchise 6305, PIE Cadillac, Bieber Jumpstart, Berwald Outright221L (The deceased \$85,000 Complete son X Berwald Abigrace 1110J) & LMG Gills Franchise 4030. We also have cow lines that have made our program a success for the last 47 years. Cow lines such as Sara, Dynette,



Roxie, Brandy, and MTX. This is an exciting time in the industry and you can't get much more exciting than your choice of around 300 heifer calves!!!



# Fall Bulls - Confident Sons



**1**  **LMG 0646**  
 08-16-2024 5154583 **100% AR**

**BERWALD CONFIDENT 2044**  
4687927

BROWN CRSB CONFIDENCE G1410  
BERWALD JAYLO 0007

**LMG MISS MARGO**  
4371225

LMG GILL 6331  
LMG MISS MARGO 5638

	ProS	HB	GM	CED	BW	WW	YW	Milk	Stay	MB	REA
<b>EPD</b>	92	13	79	8	-0.2	87	135	31	11	0.66	0.20
<b>PCTL (%)</b>	68	97	8	87	80	3	7	8	89	16	35

**BW:** 83 lbs.

**WW:** 723 lbs.

**Dam's MPPA:** 108

This guy is sired by Berwald Confident 2044, a proven performance and maternal sire, out of LMG Gill 6331, with LMG Miss Margo as his dam. This guy has pedigree rooted in functional, productive Red Angus lines. His EPD profile blends balanced traits for real-world ranch performance, including growth (WW +87, YW +135) that points to pounds on the ground, maternal strength (Milk +31, STAY +11) that supports productive daughters, and good marbling (Marb +0.65).

**Pen 201**



**2**  **GILL CONFIDENT 4040**  
 08-31-2024 5147811 **100% AR**

**BERWALD CONFIDENT 2044**  
4687927

BROWN CRSB CONFIDENCE G1410  
BERWALD JAYLO 0007

**VANWYE MS ARSON 704**  
3760033

RED SSS ARSON 85U  
BROWN MS BIG SKY U7829

	ProS	HB	GM	CED	BW	WW	YW	Milk	Stay	MB	REA
<b>EPD</b>	65	29	37	15	-1.9	80	125	27	13	0.51	0.01
<b>PCTL (%)</b>	93	88	81	31	49	10	15	39	75	35	73

**Dam's MPPA:** 102

**BW:** 72 lbs.

**WW:** 730 lbs.

Excellent actual birth and weaning weights right from the start and strong performance numbers (weaning & yearling) that back up his stout build. His EPD profile shows solid growth and balanced maternal strength.

**Pen 201**



3



**GILL CONFIDENT 8841**

08-24-2024 5154571 100% AR

**BERWALD CONFIDENT 2044**  
4687927

BROWN CRSB CONFIDENCE G1410  
BERWALD JAYLO 0007

**LMG MISS BLOCKANA 8841**  
4097454

LMG GILLS VIN DIESEL 4533  
FEDDES BLOCKANA Z92

**Dam's MPPA:** 101  
**BW:** 89 lbs.  
**WW:** 727 lbs.

This bull is built to add performance where it counts. He's the kind that'll put extra pounds on his calves from birth through yearling. The heavier the weaning, means more payweight at sale time.

**Pen 201**

	ProS	HB	GM	CED	BW	WW	YW	Milk	Stay	MB	REA
EPD	45	-17	63	11	-0.4	76	118	30	8	0.66	0.17
PCTL (%)	99	99	27	69	77	19	26	15	98	16	40

**DVAuction**  
Broadcasting Real-Time Auctions

**View the Auction Live! Bid Online...**  
**you're ringside right at your desk!**

**Buying online is as easy as 1, 2, 3...**

1. Create an account at [www.DVAuction.com](http://www.DVAuction.com) under the "Register" tab
2. Apply for bidding approval by clicking on the "details" tab at least 24 hours prior to the auction – a DV representative will notify you once you have been approved.
3. Tune in for the sale to make your purchases!



**High Speed internet** is required for successful bidding-be sure to check the log-time monitor in the top left corner to ensure real-time broadcasts.  
**Proxy-bidding** – if you can't make time to watch the sale, register a proxy bid and let our system represent your bid while you're away. Look for the "proxy bid" tab on the auction listing, and fill in your maximum bids. We'll handle the rest!

**For General Questions Please contact Our Office: 402-316-5460 or [support@dvauction.com](mailto:support@dvauction.com)**

4



## GILL CONFIDENT 0630

08-24-2024 5154545 100% AR

**BERWALD CONFIDENT 2044**  
4687927

BROWN CRSB CONFIDENCE G1410  
BERWALD JAYLO 0007

**LMG MISS LAKOTA**  
4371299

LMG GILL 6331  
LMG MISS 7287

	ProS	HB	GM	CED	BW	WW	YW	Milk	Stay	MB	REA
<b>EPD</b>	83	-4	88	10	1.0	90	147	28	8	0.63	0.20
<b>PCTL (%)</b>	79	99	4	80	92	2	2	23	98	19	35

**Dam's MPPA:** 102

**BW:** 88 lbs.

**WW:** 730 lbs.

He traces back to a strong Red Angus pedigree (sire Berwald Confident 2044 and dam LMG Gill 6331 x LMG Miss Lakota), blending proven performance and maternal depth. His EPD profile reflects balanced genetics with calving ease and birth weight in desirable ranges (CED +10, BW +1.0), growth and performance upside (WW +90, YW +147) to help put pounds on the ground, and maternal strength (Milk +28) for daughters that stay productive in the herd. His carcass numbers and marbling also support end-product quality potential.

**Pen 201**

5



## GILL CONFIDENT 0520

08-11-2024 5154615 87.5 AR 12.5 XX

**BERWALD CONFIDENT 2044**  
4687927

BROWN CRSB CONFIDENCE G1410  
BERWALD JAYLO 0007

**LMG MISS SARA**  
4371171

HBR LINEDRIVE 663  
LMG MISS SARA 6540

	ProS	HB	GM	CED	BW	WW	YW	Milk	Stay	MB	REA
<b>EPD</b>	107	30	77	15	-3.2	78	121	24	13	0.60	0.30
<b>PCTL (%)</b>	46	87	10	28	26	14	20	69	73	23	22

**Dam's MPPA:** 99

**BW:** 76 lbs.

**WW:** 655 lbs.

This guy is excellent in several categories from strong calving ease, robust growth, and maternal genetics that fit real-world ranch use. Backed by proven Red Angus pedigree, he's built to put performance and productivity into your herd. He is registered as a percentage Red Angus on paper. In real life he is 100.

**Pen 201**

## Our Commitment

We know in order for us to be successful, our customers need to be successful as well. That's why we have committed ourselves to add value to your calf crop with feeder calf and heifer marketing. Ask about how we can help promote your Gill Red Angus sired calves to potential customers.

## Our Dedication

We are dedicated to raising the highest quality bulls possible for both our customers and the feeders who purchase our customer's calves every year. In order for us to supply you with the best bulls possible, we will only use the absolute best bulls out of the very best cows. We also take the bottom 20% of our cowherd and sell them every December. We raise the bulls with the goal of developing them to their max potential, while keeping them sound and fertile. Our cows must be easy fleshing, sound made, fertile, and have real good udders on them. No exceptions! In order for our customers to continue getting a premium for their heifer calves, the bulls you use need to come from the best genetics possible.



# Fall Bulls That Have The Look



**6** **GILL PROPULSION 4046**  
 09-03-2024 5139021 100% AR

BB PROPULSION 9096  
 4169122

PIE ONE OF A KIND 777  
 BB MS GINNIE 6256

VANWYE BLACKCAP PRINCESS 739  
 4049854

ANDRAS NEW DIRECTION R240  
 VANWYE PRINCESS 75Z

	ProS	HB	GM	CED	BW	WW	YW	Milk	Stay	MB	REA
EPD	99	26	74	11	-0.6	79	130	26	7	0.66	-0.04
PCTL (%)	57	91	12	65	74	11	10	44	99	16	82

BW: 69 lbs. WW: 734 lbs. Dam's MPPA: 103

### Black Hided

Herd Sire Alert! He's got a solid set of EPDs that make him very well-rounded. He has enough calving ease without giving up performance. His 79 WW and 130 YW show he has the growth that his calves will really push down the scale and a 0.65 Marb keeps carcass quality in the mix. Overall, he's the kind that'll work whether you're keeping replacements or selling calves by the pound.

Pen 202

**7** **GILL PLAYMAKER 8853**  
 08-17-2024 5154537 100% AR

WSM PLAYMAKER 1080J  
 4468115

PIE QUARTERBACK 789  
 BIEBER PRIMROSE 107W

LMG MISS 7219  
 3899325

LMG GILLS STATEMENT 2066  
 LMG MISS STEPHANIE 5642

	ProS	HB	GM	CED	BW	WW	YW	Milk	Stay	MB	REA
EPD	51	3	48	7	0.4	79	128	26	11	0.45	0.21
PCTL (%)	98	99	59	93	87	12	12	44	89	47	33

BW: 80 lbs. WW: 768 lbs. Dam's MPPA: 104

He came off his mama strong with 768 lb weaning weight. His EPDs back that up with growth numbers near the upper end of the breed for both weaning and yearling weights, so you can expect calves that hit the ground heavy and keep gaining. Overall, he's the kind that brings pounds, performance, and maternal strength to a commercial herd.

Pen 202



**8** **GILL PROSPERITY 2110**  
 08-10-2024 5154655 100% AR

PIE PROSPERITY 1235  
 4542591

KJL/CLZB COMPLETE 7000E  
 MS RAMBO TUO 5318

PDG WILLOW VENICE 2110  
 4518337

PIE LEGEND 468  
 PDG WILLOW VENICE 1829

	ProS	HB	GM	CED	BW	WW	YW	Milk	Stay	MB	REA
EPD	135	53	82	12	-0.9	79	135	28	16	0.57	0.38
PCTL (%)	14	49	6	56	67	12	6	27	32	26	10

BW: 74 lbs. WW: 658 lbs. Dam's MPPA: 100

We have solid Red Angus bloodlines that are built for performance in the pasture. This animal carries the strong breed characteristics Red Angus are known for — good calving ease, balanced growth and maternal traits, and dependable, predictable performance. Perfect for ranchers looking to add easy-doing, high-quality genetics into their herd that will work.

Pen 202



# GILL RED ANGUS

9



## GILL ARSON 4050

09-13-2024 5139043 100% AR

RED SSS ARSON 85U  
2223267

RED SSS ARSENAL 271S  
RED SSS SCAARA 951L

JECA U313  
1264080

BROWN VACATION H7106  
JECA M224

	ProS	HB	GM	CED	BW	WW	YW	Milk	Stay	MB	REA
EPD	87	24	63	6	0.7	63	105	25	13	0.29	0.29
0.29	74	92	26	96	90	63	50	57	73	85	23

BW: 89 lbs. WW: 756 lbs. Dam's MPPA: 100

With balanced numbers across the board, he will bring in calves that consistently bring in scale crushers. Good growth without going overboard and still a cow maker's kind.

Pen 202



Lot 9

10



## GILL PROSPERITY 1930

08-13-2024 5154653 100% AR

PIE PROSPERITY 1235  
4542591

KJL/CLZB COMPLETE 7000E  
MS RAMBO TUO 5318

PDG WILLOW ROBIN 1930  
4205432

WILLOW EASTWOOD 1318-1565  
PDG WILLOW ROBIN 114

	ProS	HB	GM	CED	BW	WW	YW	Milk	Stay	MB	REA
EPD	130	54	76	5	3.1	95	162	23	18	0.53	0.09
PCTL (%)	18	46	11	97	99	1	1	76	17	32	58

Dam's MPPA: 105

BW: 89 lbs.

WW: 753 lbs.

Sired by Prosperity and out of Robin 1930, built on proven Red Angus genetics. His EPDs combine practical calving ease, growth performance, and maternal strength, while bred to leave calves with performance and daughters that will work in your herd.

Pen 202

11



## GILL PROSPERITY 2035

08-13-2024 5154553 100% AR

PIE PROSPERITY 1235  
4542591

KJL/CLZB COMPLETE 7000E  
MS RAMBO TUO 5318

PDG WILLOW CHIEFTESS 2035  
4341999

PIE JUST RIGHT 800S  
PDG WILLOW SUE 1603

	ProS	HB	GM	CED	BW	WW	YW	Milk	Stay	MB	REA
EPD	137	41	97	10	-0.9	76	126	24	14	0.89	-0.07
PCTL (%)	12	72	1	73	67	19	14	72	64	3	85

Dam's MPPA: 98

BW: 84 lbs.

WW: 648 lbs.

Built on proven Red Angus bloodlines with EPDs backing his genetic potential. Sired by Prosperity, his pedigree blends the functional performance and maternal strength ranchers rely on. His EPDs reflect practical calving ease and birth weight balance, growth genetics that help you put pounds on the ground, and maternal traits for productive daughters that stay in the herd. Bred to add real-world performance and productivity to commercial and seedstock herds alike.

Pen 202

12



## GILL PROSPERITY 2041

08-10-2024 5154567 100% AR

PIE PROSPERITY 1235  
4542591

KJL/CLZB COMPLETE 7000E  
MS RAMBO TUO 5318

WILLOW ROSETTE 2041  
4343803

PIE COWBOY KIND 69S  
WILLOW ROSETTE 1511

	ProS	HB	GM	CED	BW	WW	YW	Milk	Stay	MB	REA
EPD	181	99	82	20	-5.5	59	105	26	25	0.58	-0.16
PCTL (%)	1	2	6	3	4	78	51	48	1	24	94

Dam's MPPA: 98

BW: 60 lbs.

WW: 620 lbs.

This guy is offering a powerful pedigree for both growth and maternal strength. His EPDs show excellent calving ease and low birthweight, strong weaning and yearling weight potential, and solid carcass merit, with many traits ranking in favorable breed percentiles. Overall a balanced sire prospect for producers seeking performance and maternal value.

Pen 202

# Yearling Bulls



**Lot 13**



**13**



## GILL BLUE PRINT 5024

01-13-2025 5183825 100% AR

**RRREDS BLUE PRINT H001**  
4287851

GLACIER CHATEAU 744  
RRREDS PRIMROSE F835

**BWF MS TRUE 319**  
4794640

PIE QUARTERBACK 789  
PIE MS TRUE 1567

	ProS	HB	GM	CED	BW	WW	YW	Milk	Stay	MB	REA
<b>EPD</b>	93	56	37	13	-4.0	73	115	34	13	0.18	0.57
<b>PCTL (%)</b>	66	42	81	52	15	26	30	2	77	96	2

**Dam's MPPA:** 104

**BW:** 80 lbs.

**WW:** 824 lbs.

Herd bull alert!!! This guy has that power and class look to him. He is a bigger framed, bigger bodied bull with gobs of muscle, length, and rib, plus he has a great disposition. 5024 posted an 80 lb birth weight with an 824 lbs weaning and EPDs that back his real-world potential. His numbers show excellent calving ease with strong growth and maternal strength — built to put a mark on the breed.

**Pen 101**



**Lot 14**

**14**



## GILL CAPTAIN 5025

01-26-2025 5183839 100% AR

**PIE CAPTAIN 057**  
4388923

PIE QUARTERBACK 789  
PIE BONNE BEL 852

**1CJN ABIGRACE 122**  
4517907

BIEBER SPARTACUS A193  
DAMAR U880 ABIGRACE 2R B170

	ProS	HB	GM	CED	BW	WW	YW	Milk	Stay	MB	REA
<b>EPD</b>	98	57	40	17	-3.5	76	124	32	15	0.46	-0.03
<b>PCTL (%)</b>	59	41	75	14	21	17	16	7	45	45	80

**BW:** 70 lbs.

**WW:** 780 lbs.

**Dam's MPPA:** 98

This bull is from a powerful, function-first pedigree built to work on real ranches. On the top side, he stems from proven Red Angus sires known for growth, sound structure and maternal consistency that produce calves with marketable performance and longevity in the cowherd. On the dam's side, deep female lines contribute fertility, udder quality and hard-working daughters that stay in production year after year. With genetics rooted in time-tested Red Angus families, this bull brings heritage and predictability to your next calf crop.

**Pen 101**



Lot 14's Paternal Grandam - PIE Bonne Bel 852

# GILL RED ANGUS

## 15 **GILL PROPULSION 5021** 01-10-2025 5183835 100% AR

BB PROPULSION 9096  
4169122

PIE ONE OF A KIND 777  
BB MS GINNIE 6256

1CJN ABIGRACE 105  
4517903

PIE CINCH 4126  
1CJN ABIGRACE 905

	ProS	HB	GM	CED	BW	WW	YW	Milk	Stay	MB	REA
EPD	86	44	42	12	-2.3	65	96	27	13	0.49	0.17
PCTL (%)	76	66	73	59	41	54	72	35	79	39	40

BW: 80 lbs. WW: 718 lbs. Dam's MPPA: 101

5021 has EPDs that back his easy-calving genetics, growth and pounds, while having the maternal strength to leave productive daughters in your herd. Built for real-world performance and ranch value.

Pen 101



Lot 16

## 17 **GILL STOCKYARD 5026** 01-15-2025 5183827 100% AR

LEM STOCKYARD 2001 ET  
4659179

BIEBER CL STOCKMARKET E119  
LEM ONEKIND 934 ET

ULRICH BARONESS 1904  
4143620

LSF SRR TAKEOVER 5051C  
PFFR MS BARONESS 763

	ProS	HB	GM	CED	BW	WW	YW	Milk	Stay	MB	REA
EPD	149	83	66	16	-3.5	67	109	27	18	0.81	0.10
PCTL (%)	6	7	22	24	21	45	42	37	17	6	55

## 18 **GILL CAPTAIN 5032** 02-03-2025 5183841 100% AR

1CJN CAPTAIN 314  
4794616

PIE CAPTAIN 057  
PIE REBELLA 1404

1CJN S MIMI 116  
4517905

BIEBER SPARTACUS A193  
DAMAR A MIMI D172

	ProS	HB	GM	CED	BW	WW	YW	Milk	Stay	MB	REA
EPD	122	48	74	8	-1.9	79	130	34	16	0.51	0.38
PCTL (%)	25	58	12	89	49	12	10	2	39	35	10



Lot 15

## 16 **GILL SPARTAN 5027** 01-18-2025 5183829 75 AR 25 XX

BIEBER SPARTAN E639  
3762927

BIEBER SPARTACUS A193  
BIEBER RENEE 477A

1CJN PIE GIRL 211  
4668551

PELTON WIDELOAD 78B

	ProS	HB	GM	CED	BW	WW	YW	Milk	Stay	MB	REA
EPD	93	26	68	9	-0.7	77	116	26	9	0.56	0.17
PCTL (%)	66	91	20	83	73	17	29	50	95	27	40

BW: 87 lbs. WW: 704 lbs. Dam's MPPA: 97

A top Spartan son with great eye appeal who is out of a Wide Load daughter. He weaned off heavy and kept it up all year.

Pen 101

Dam's MPPA: 101

BW: 85 lbs.

WW: 745 lbs.

This guy combines proven bloodlines with functional, rugged body style. From the sire side who is known for muscle shape, structural soundness, calving ease and growth, and on the dam side stems from a line known for fertility, udder quality, and staying power. He carries a stout, square hip, wide chest, and strong top — built to put performance and power into every calf while maintaining ease of movement and soundness for years on pasture. Pedigree and phenotype come together to make him a bull ranchers can count on to leave productive daughters and heavy weaning calves.

Pen 101

Dam's MPPA: 106

BW: 85 lbs.

WW: 785 lbs.

Grounded in solid Red Angus bloodlines, he's the kind of bull built for real ranch work — stout through the top, thick in the hip, wide in the chest and clean-made on his feet and legs. He carries the kind of muscle and substance that stand up to hard miles.

Pen 101

# Deep-Bodied Powerful Yearlings

Lots 19, 36, 37 are  
3/4 Brothers



Lot 19's Dam - LMG Miss Susette 9673



Lot 19

19



## GILL OUTRIGHT 5039

02-24-2025 5183763 100% AR

BERWALD PVF OUTRIGHT 221L  
4723623

KJL/CLZB COMPLETE 7000E  
BERWALD ABIGRACE 1110J

LMG MISS SUSETTE 9673  
4283299

4MC PROSPECT 469  
LMG MISS SUSETTE

	ProS	HB	GM	CED	BW	WW	YW	Milk	Stay	MB	REA
EPD	123	55	68	7	0.5	79	131	23	16	0.52	0.14
PCTL (%)	25	45	20	93	88	12	9	78	36	33	47

BW: 95 lbs. WW: 741 lbs. Dam's MPPA: 101

Herd bull Alert!!! Grounded in time-proven Red Angus bloodlines that have worked hard on ranches across the country. He's the kind that is built for function and longevity. He offers a stout and deep chest and clean-moving feet and legs. Backed by genetics known for mothering ability and structural soundness. This bull is bred to leave daughters that stay productive in the herd and bulls that work season after season. He is big bodied, long made, heavy muscled, stands on great feet and legs. He is both powerful and smooth made. His dam is a super cow who has a 101 MPPA. She is long made, excellent uddered and has super feet and legs. While Outright's dam is a donor cow for PVF Red Angus and has proven several top bulls and daughters for them. He is a breed changer and a son of Outright. He needs your attention!!!

Pen 102



Lot 19's - Paternal Grandmother - Berwald Abigrace 1110J



Lot 19's - Maternal Grandsire - 4MC Prospect 469

20



## GILL ENERGIZE 5003

01-29-2025 5131395 100% AR

BIEBER ENERGIZE K285  
4621091

BIEBER CL ENERGIZE F121  
BIEBER SURPRISE 515E

VANWYE SPLIT ROCK 805  
4049802

GMRA PEACEMAKER 1216  
VANWYE SPLIT ROCK 312

	ProS	HB	GM	CED	BW	WW	YW	Milk	Stay	MB	REA
EPD	99	65	35	12	-1.4	73	112	31	18	0.52	-0.15
PCTL (%)	57	28	84	58	58	27	36	7	13	33	93

BW: 75 lbs. WW: 705 lbs. Dam's MPPA: 102

He was made to produce easy-calving calves that grow and productive daughters that stay in the herd. With balanced carcass values as well, he's a practical, functional sire that ranchers can trust from pasture to pen.

Pen 102



Lot 20

**21** **GILL FIRESTORM 5008**  
 02-19-2025 5147781 100% AR

PZC TMAS FIRESTORM 1800 ET 1472101 RED SIX MILE SAKIC 832S  
 GT CITA 4060

MANN MS R017 904 Y53 1484333 BUF CRK LANCER R017  
 FSR N.KING ESTHER-ET 907W

	ProS	HB	GM	CED	BW	WW	YW	Milk	Stay	MB	REA
EPD	62	49	13	11	-0.2	57	83	28	14	0.11	0.01
PCTL (%)	95	57	99	64	80	82	90	26	70	98	73

Dam's MPPA: 102  
 BW: 85 lbs.  
 WW: 631 lbs.

This guy has a super look to him and is well above average for milk EPD. He will make you daughters that you will want to keep and sons that have the eye appeal that the buyers love to feed.

Pen 102

**22** **GILL ENERGIZE 5016**  
 03-12-2025 5222125 100% AR

BIEBER ENERGIZE K285 4621091 BIEBER CL ENERGIZE F121  
 BIEBER SURPRISE 515E

VAN WYE BLACKCAP 145 5222123 CONNEALY EMERALD  
 VAN WYE BLACKCAP 6E

	ProS	HB	GM	CED	BW	WW	YW	Milk	Stay	MB	REA
EPD	129	51	78	12	-2.3	73	122	26	13	0.49	0.18
PCTL (%)	19	54	9	54	41	25	18	49	73	39	39

BW: 68 lbs.  
 WW: 723 lbs.

**Black Hided**

His dam comes from a line that consistently raises productive, functional females. His pedigree is rooted in cattle that thrive on grass and stay in your herd. He is bred to sire profitable, productive progeny for both commercial and registered herds.

Pen 102



**23** **GILL CAPTAIN 5022**  
 01-11-2025 5183837 100% AR

PIE CAPTAIN 057 4388923 PIE QUARTERBACK 789  
 PIE BONNE BEL 852

PIE ABIGRACE 2632 4702949 KJL/CLZB COMPLETE 7000E  
 C-BAR ABIGRACE 841F

	ProS	HB	GM	CED	BW	WW	YW	Milk	Stay	MB	REA
EPD	154	80	74	18	-5.1	62	113	34	19	0.78	0.16
PCTL (%)	4	9	12	8	6	66	34	2	9	7	42

BW: 65 lbs. WW: 750 lbs. Dam's MPPA: 99

**Black Hided**

He brings practical performance with a functional growth curve EPDs that combine easy-calving genetics, growth to add pounds on the ground, and maternal strength that leaves productive daughters in the herd. Built rugged and ready to work.

Pen 102

**24** **GILL DYNASTY 5010**  
 2-18-2025 Commercial 100% AR

BIEBER DYNASTY H524 4308117 9 MILE FRANCHISE 6305  
 BIEBER ROSE 520F

PUREBRED RED ANGUS COW

BW: 70 lbs. WW: 711 lbs.

**Black Hided**

He has excellent weights that mix good calving ease and growth, and the sire that adds maternal strength. He is built for practical performance, market-ready calves, and daughters that stay in the herd.

Pen 102

# Stretchy Fall Bulls

25



## GILL PLAYMAKER 1605

08-13-2024 5154613 100% AR

WSM PLAYMAKER 1080J  
4468115

PIE QUARTERBACK 789  
BIEBER PRIMROSE 107W

LMG GILLS MISS ROCKER 1605  
4571435

4MC OPTIMISM 482  
LMG MISS ROCKER 6503

	ProS	HB	GM	CED	BW	WW	YW	Milk	Stay	MB	REA
EPD	149	48	101	2	3.6	89	151	22	18	0.59	0.34
PCTL (%)	6	59	1	99	99	2	1	87	16	23	13

BW: 94 lbs. WW: 655 lbs. Dam's MPPA: 98

Check out the powerful Playmaker son who is at the top 1% for Gridmaster and yearling weight, while the top 2 for weaning weight EPDs! His dam is out of the famous Rocker cow line. This is a no miss type of sire!

Pen 203



Lot 25



Lot 26

26



## GILL PLAYMAKER 1558

08-19-2024 5154605 100% AR

WSM PLAYMAKER 1080J  
4468115

PIE QUARTERBACK 789  
BIEBER PRIMROSE 107W

LMG GILLS MISS ROXIE 1558  
4571349

WILLOW FRANCHISE 1638-1853  
LMG MISS ROXIE 9550

	ProS	HB	GM	CED	BW	WW	YW	Milk	Stay	MB	REA
EPD	119	67	51	12	-1.2	73	125	30	20	0.51	-0.17
PCTL (%)	29	23	48	56	62	27	16	13	5	35	94

BW: 65 lbs. WW: 637 lbs. Dam's MPPA: 105

This guy is sired by WSM Playmaker 1080J, a proven performance sire with growth and carcass strength, and his dam LMG Gills Miss Roxie-1558 brings functional female genetics. The Roxie line has consistently been a top cow line for us over the years. His EPD profile shows balanced genetics with practical calving ease, power, and maternal strength that make him a great choice for the commercial rancher.

Pen 203



Bryan's Grumpy Old Man 50th Birthday Party



Visiting the state capital over Christmas

# GILL RED ANGUS

27



## GILL SPARTACUS 5513

08-26-2024 5154577 100% AR

LMG GILLS SPRATACUS 1036  
4566263

BIEBER SPARTACUS A193  
DHX MAGGIE ROSE 241F

LMG MISS DYNETTE 5513  
3523392

C-T GRAND STATEMENT 1025  
LMG MISS DYNETTE 0003

	ProS	HB	GM	CED	BW	WW	YW	Milk	Stay	MB	REA
EPD	82	31	51	9	0.1	84	137	23	12	0.15	0.06
PCTL (%)	80	85	51	83	84	5	5	77	85	97	63

Dam's MPPA: 103  
BW: 64 lbs.  
WW: 636 lbs.

He's got the kind of performance numbers that line up with real-world expectations. At birth he came in right, and his weaning weight show he's putting on pounds early and keeps gaining strong.

Pen 203

28



## GILL HOMELAND 1559

09-05-2024 5154549 100% AR

EGL HOMELAND 0087  
4373599

SCHULER SUPREMACY 7177E  
EGL DUCHESS 8007

LMG GILLS MISS MAXINE 1559  
4571351

WSM MERLIN 949G  
LMG MISS MAXINE 2533

	ProS	HB	GM	CED	BW	WW	YW	Milk	Stay	MB	REA
EPD	72	29	42	10	-0.7	70	108	25	12	0.33	0.23
PCTL (%)	90	88	71	76	73	35	45	57	83	79	30

Dam's MPPA: 98  
BW: 79 lbs.  
WW: 669 lbs.

He traces to Schuler Supremacy 7177E on the top side and out of LMG Gills Miss Maxine 1559, a cow line known for maternal strength and functional daughters. His EPD profile shows maternal value (Milk +24; Stay +12) that fits real-world ranch use. Balanced carcass genetics provide quality upside for feeder or grid programs. Built on sound Red Angus genetics.

Pen 203

29



## GILL HOMELAND 1644

08-22-2024 5154539 100% AR

EGL HOMELAND 0087  
4373599

SCHULER SUPREMACY 7177E  
EGL DUCHESS 8007

LMG GILLS MISS STORMY 1644  
4571501

WILLOW FRANCHISE 1638-1853  
LMG MISS STORMY 9511

	ProS	HB	GM	CED	BW	WW	YW	Milk	Stay	MB	REA
EPD	76	34	41	6	1.4	82	126	27	11	0.25	0.76
PCTL (%)	87	82	73	94	94	7	14	36	88	90	1

Dam's MPPA: 101  
BW: 77 lbs.  
WW: 732 lbs.

This is a pedigree known for functional performance and sound genetics, out of LMG Gills Miss Stormy 1644, a cow line built on productivity and structural correctness. His EPDs stack up with growth and performance upside with top 1% for Ribeye, 7% for weaning weight along with top 14% for yearling weight. We know he is stacked full of muscle and growth.

Pen 203

30



## GILL PROPULSION 4043

9-12-2024 5147775 100% AR

BB PROPULSION 9096  
4169122

PIE ONE OF A KIND 777  
BB MS GINNIE 6256

VANWYE SPLIT ROCK 437  
1747821

BIEBER HARD DRIVE Y120  
VANWYE SPLIT ROCK 312

	ProS	HB	GM	CED	BW	WW	YW	Milk	Stay	MB	REA
EPD	105	48	57	9	-0.5	81	127	26	12	0.59	0.06
PCTL (%)	49	59	37	83	75	9	13	44	80	23	63

BW: 86 lbs.

WW: 730 lbs.

Dam's MPPA: 97

He goes back to proven growth and maternal lines that are full of performance, very structurally sound, and stacked with maternal strength.

Pen 203





**31** **LMG CINCH 7233**  
 09-05-2024 5154593 100% AR

LMG GILLS CINCH 1033  
 4566257

PIE CINCH 4126  
 1CJN TILLY 714

LMG MISS 7233  
 3899299

LMG GILLS STATEMENT 2066  
 LMG MISS SARA 1345

	ProS	HB	GM	CED	BW	WW	YW	Milk	Stay	MB	REA
EPD	80	43	37	9	0.0	76	119	30	13	0.20	0.04
PCTL (%)	82	68	80	82	83	18	23	12	71	95	67

BW: 78 lbs. WW: 765 lbs. Dam's MPPA: 104

This bull really shows what you're after in a performance sire. He weaned off heavy at 765 lbs and his EPDs back that up with strong growth (about +75 weaning and +118 yearling), so you can expect calves that hit the ground and keep gaining. Calving ease and birth weight are moderate, and he's got enough milk and maternal background to raise good replacement females. He's the kind of bull that adds pounds and keeps his daughters productive.

Pen 203

**32** **LMG SPARTACUS 1598**  
 09-05-2024 5154559 100% AR

LMG GILLS SPRATACUS 1036  
 4566263

BIEBER SPARTACUS A193  
 DHX MAGGIE ROSE 241F

LMG GILLS MISS MERLINA 1598  
 4571421

BIEBER CL STOCKMARKET E119  
 3SCC MERLINA E174

	ProS	HB	GM	CED	BW	WW	YW	Milk	Stay	MB	REA
EPD	90	54	37	10	-1.4	71	108	24	17	0.48	0.06
PCTL (%)	70	48	81	75	58	33	44	68	22	40	63

BW: 79 lbs. WW: 669 lbs. Dam's MPPA: 98

Out of Spartacus and Merlina, built on trusted genetics. His EPDs combine practical calving ease with growth and maternal strength, backed by genetics for real ranch performance. Bred to leave market-ready calves and productive daughters. He's a bull ranchers can count on from pasture to the sale ring.

Pen 203



Almost all of the family

# BERWALD PVF OUTRIGHT 221L

Sire of Lots 19 & 33-45



01-17-2023                      4723623                      100% AR

KJL/CLZB COMPLETE 7000E  
3796236

LEACHMAN PLEDGE A282Z  
HXC 50

BERWALD ABIGRACE 1110J  
4596515

PIE QUARTERBACK 789  
BER ABIGRACE 1322

	ProS	HB	GM	CED	BW	WW	YW	Milk	Stay	MB	REA
EPD	129	32	97	13	-2.7	76	133	27	11	0.75	0.32
PCTL (%)	21	78	4	47	34	24	12	43	87	11	121

BW: 92 lbs.

WW: 796 lbs.

YW: 1286 lbs.



Outright's Dam - Berwald Abigrace 1110J

We put on thousands of miles in the winter/spring looking for the next great herdsire. When we saw Outright, we were blown away with his power, rib shape, length, and muscle. Plus he had the eye appeal we were looking for. He had the disposition we were looking for and stood a great set of feet. Then we gathered up the information on his dam. She is a great one!!! Awesome udder, depth of body, sound, great feet, and has a super disposition. He was purchased for \$85,000 with a few partners. We AI'd all of our March calving cows to him, and over 100 head of our April calving cows. He has not disappointed us. His calves have the same great look he had. They are what this breed needs. His daughters are going to make awesome cows and his sons will move this breed!



## GILL RED ANGUS

*You buy our bulls, we bid on your calves!*

# Yearling Outright Sons



**Lot 33**



**33**



## GILL OUTRIGHT 5074

02-24-2025 5183823 100% AR

BERWALD PVF OUTRIGHT 221L  
4723623

KJL/CLZB COMPLETE 7000E  
BERWALD ABIGRACE 1110J

LMG MISS CHENEY 9648  
4283249

HBR LINEDRIVE 663  
LMG MISS CHENEY 2593

	ProS	HB	GM	CED	BW	WW	YW	Milk	Stay	MB	REA
EPD	110	59	51	21	-5.2	69	116	27	16	0.44	0.31
PCTL (%)	40	37	50	2	5	39	29	34	34	48	20

Dam's MPPA: 98

BW: 65 lbs.

WW: 842 lbs.

Herd bull alert! A true calving ease sire that is stout made, he's wide in the chest, thick through the top and hip, with correct feet and legs — the kind that grabs your eye and holds up on the pasture. His pedigree blends cattle with proven maternal strength, bred to cover heifers and cows confidently and leave daughters that stick in the herd for years to come. Rugged, dependable and ready for the long haul. His EPD's rank him at the top from calving ease to performance to carcass. He is a complete herd sire type bull!

Pen 103

**34**



## GILL OUTRIGHT 5033

02-23-2025 5183753 100% AR

BERWALD PVF OUTRIGHT 221L  
4723623

KJL/CLZB COMPLETE 7000E  
BERWALD ABIGRACE 1110J

LMG MISS 7227  
3899309

BIEBER HARD DRIVE Y120  
LMG MISS SARA 1220

	ProS	HB	GM	CED	BW	WW	YW	Milk	Stay	MB	REA
EPD	112	49	63	17	-2.0	73	114	23	14	0.65	0.14
PCTL (%)	38	57	26	15	47	25	33	78	62	17	47

Dam's MPPA: 95

BW: 83 lbs.

WW: 782 lbs.

Out of a Bieber Hard Drive Y120 x LMG Miss 7227 cow. He is a stout made, rugged breeder that'll get the job done on pasture. He weaned heavy with a 782 lb weaning weight, proving he can do it from the start. On the genetic side, his EPD spread paints a balanced picture for today's rancher — solid growth with calving ease built in and plenty of stayability and maternal strength to keep daughters productive.

Pen 103



**35** **GILL OUTRIGHT 5047**  
 02-27-2025 5183777 100% AR

BERWALD PVF OUTRIGHT 221L 4723623 KJL/CLZB COMPLETE 7000E  
 BERWALD ABIGRACE 1110J

LMG GILLS MISS QUEEN 1513 4571285 STRA TRENDING 618  
 LMG MISS QUEEN 6528

	ProS	HB	GM	CED	BW	WW	YW	Milk	Stay	MB	REA
EPD	106	59	48	11	-0.6	83	131	22	15	0.48	0.11
PCTL (%)	46	38	59	68	74	6	10	87	52	40	53

BW: 95 lbs. WW: 819 lbs. Dam's MPPA: 100

Lot 35 is a bull who weaned heavy at 819 lb. His EPDs stack up with growthy WW 8.3 and YW 131, solid calving ease and balanced maternal values, along with carcass appeal — bred to add pounds on calves and longevity in daughters. Built for the real world and ready to cover cows.

Pen 103

## Lots 19, 36, 37 are 3/4 Brothers

**36** **GILL OUTRIGHT 5048**  
 03-01-2025 5183779 100% AR

BERWALD PVF OUTRIGHT 221L 4723623 KJL/CLZB COMPLETE 7000E  
 BERWALD ABIGRACE 1110J

LMG MISS 7356 3899063 4MC PROSPECT 469  
 LMG MISS STORMY 5628

	ProS	HB	GM	CED	BW	WW	YW	Milk	Stay	MB	REA
EPD	132	49	83	8	1.5	85	148	22	15	0.52	0.44
PCTL (%)	16	57	6	88	95	5	2	84	52	33	6

BW: 95 lbs. WW: 715 lbs. Dam's MPPA: 100

He comes from deep, functional Red Angus bloodlines that have worked long and well in real country genetics built on sound feet and legs, longevity, and proven cow herd performance. He's stout and square-made, with a wide chest, thick top and hip, and the kind of rugged body style that covers cows with confidence and keeps working season after season. His mother is a great cow and his daughters will make great cows!

Pen 103



**37** **GILL OUTRIGHT 5060**  
 03-14-2025 5183799 100% AR

BERWALD PVF OUTRIGHT 221L 4723623 KJL/CLZB COMPLETE 7000E  
 BERWALD ABIGRACE 1110J

LMG MISS MTX 9537 4283035 4MC PROSPECT 469  
 LMG MISS MTX 6575

	ProS	HB	GM	CED	BW	WW	YW	Milk	Stay	MB	REA
EPD	150	81	69	9	0.2	75	124	25	19	0.46	0.20
PCTL (%)	6	9	18	81	85	21	17	57	9	45	35

BW: 94 lbs. WW: 799 lbs. Dam's MPPA: 101

Out of LMG Miss MTX 9537, combining growth, maternal strength, and functional structure. Weaned at 800 lbs (122 ratio), showing early growth and performance. Growthy and maternal-minded. Marbling and ribeye numbers support carcass merit. A stout, rugged bull built to leave productive calves and long-lasting daughters in your herd.

Pen 103

38



## GILL OUTRIGHT 5070

03-21-2025 5183817 100% AR

BERWALD PVF OUTRIGHT 221L  
4723623

KJL/CLZB COMPLETE 7000E  
BERWALD ABIGRACE 1110J

LMG GILLS MISS BRANDY 1562  
4571357

BIEBER SPARTACUS F129  
LMG MISS BRANDY 4122

	ProS	HB	GM	CED	BW	WW	YW	Milk	Stay	MB	REA
EPD	112	43	69	14	-3.7	73	120	25	14	0.57	0.07
PCTL (%)	38	67	18	37	18	27	22	58	69	26	61

Dam's MPPA: 98

BW: 83 lbs.

WW: 757 lbs.

A true calving ease bull full of performance out of Outright who will grab your eye sale day. He is out of the Brandy line, which is one of the oldest cow lines here at Gill Red Angus.

Pen 103

39



## GILL OUTRIGHT 5042

02-25-2025 5183767 100% AR

BERWALD PVF OUTRIGHT 221L  
4723623

KJL/CLZB COMPLETE 7000E  
BERWALD ABIGRACE 1110J

LMG GILLS MISS WIX 9567 1651  
4571513

LMG GILLS DIESEL 8413  
LMG MISS WIX 9567

	ProS	HB	GM	CED	BW	WW	YW	Milk	Stay	MB	REA
EPD	75	30	45	14	-3.2	59	96	28	12	0.63	-0.09
PCTL (%)	88	87	67	36	26	77	71	23	83	19	88

Dam's MPPA: 98

BW: 83 lbs.

WW: 718 lbs.

He combines practical performance with strong genetics and DNA-enhanced EPDs for the modern commercial producer. With very good calving ease and low birth weight genetics, he's suited for heifers or cow herds needing trouble-free calvings. His growth profile supports solid weaning and yearling weight potential, and maternal values to make productive daughters that raise calves year-after-year.

Pen 103

40



## GILL OUTRIGHT 5045

02-27-2025 5183773 100% AR

BERWALD PVF OUTRIGHT 221L  
4723623

KJL/CLZB COMPLETE 7000E  
BERWALD ABIGRACE 1110J

LMG GILLS MISS OSCE 1606  
4571437

BIEBER CL STOCKMARKET E119  
LMG MISS OSCE 9710

	ProS	HB	GM	CED	BW	WW	YW	Milk	Stay	MB	REA
EPD	127	46	81	7	0.2	83	137	26	14	0.59	0.29
PCTL (%)	21	63	7	94	85	7	5	47	58	23	23

Dam's MPPA: 101

BW: 94 lbs.

WW: 791 lbs.

Exhibits strong growth with an adjusted weaning weight of 791 lbs and excellent ratios; top percentiles for WW, YW and carcass traits. Structural soundness and proven pedigree depth make him a reliable sire for improving maternal and terminal performance on commercial or registered herds.

Pen 103

41



## GILL OUTRIGHT 5068

03-17-2025 5183815 100% AR

BERWALD PVF OUTRIGHT 221L  
4723623

KJL/CLZB COMPLETE 7000E  
BERWALD ABIGRACE 1110J

LMG MISS LASS 9552  
4283065

PIE LEGEND 468  
LMG MISS LASS 4047

	ProS	HB	GM	CED	BW	WW	YW	Milk	Stay	MB	REA
EPD	110	53	57	18	-5.6	64	114	30	15	0.44	0.26
PCTL (%)	41	49	37	9	4	57	32	12	50	48	26

Dam's MPPA: 102

BW: 71 lbs.

WW: 739 lbs.

Genetics forged for soundness, fertility and hard work in the pasture. He's big-bodied, thick-made and square in the hip, with the kind of strong top, wide chest and correct feet and legs that keep him moving where the cows are. Plus he has a -5 birthweight EPD and an 18 CED with positive weaning and yearling EPD's. He has all the bases covered.

Pen 103

This sale will be broadcast live on the internet.





**42**



## GILL OUTRIGHT 5037

02-24-2025

5183759

100% AR

**BERWALD PVF OUTRIGHT 221L**  
4723623

KJL/CLZB COMPLETE 7000E  
BERWALD ABIGRACE 1110J

**LMG GILLS MISS 7312 1671**  
4571545

LMG GILLS HARD DRIVE 7003  
LMG MISS 7312

	ProS	HB	GM	CED	BW	WW	YW	Milk	Stay	MB	REA
<b>EPD</b>	140	66	74	16	-4.2	74	122	25	17	0.54	0.38
<b>PCTL (%)</b>	11	25	13	18	13	23	19	59	23	30	10

**BW:** 77 lbs.

**WW:** 768 lbs.

**Dam's MPPA:** 99

He brings a balanced performance profile with sound weaning and yearling figures (adjusted 79 lb/768 lb) and EPDs that speak to his true genetic potential. He offers excellent calving ease genetics (CED +16, BW -4.2) and above-average growth (WW +74, YW +122) compared to breed averages, supporting early performance and future pounds on the ground with solid maternal merit (Milk+25, Stay +17).

**Pen 103**

**43**



## GILL OUTRIGHT 5067

03-16-2025

5183813

100% AR

**BERWALD PVF OUTRIGHT 221L**  
4723623

KJL/CLZB COMPLETE 7000E  
BERWALD ABIGRACE 1110J

**LMG GILLS MISS MTX 1358 1618**  
4571461

BIEBER CL STOCKMARKET E119  
LMG MISS MTX 1358

	ProS	HB	GM	CED	BW	WW	YW	Milk	Stay	MB	REA
<b>EPD</b>	113	34	79	11	-2.0	75	123	29	12	0.86	0.26
<b>PCTL (%)</b>	36	82	8	68	47	20	18	22	85	4	26

**Dam's MPPA:** 103

**BW:** 95 lbs.

**WW:** 832 lbs.

He's well-balanced and performance-oriented, with an adjusted weaning weight of 832 lbs at 110 ratio. EPDs show moderate birth weight (-2.0) with solid growth (WW 74, YW 120) and above-average maternal values (Milk 28) — offering a nice blend of calving ease genetics and growth potential for a range of commercial operations.

**Pen 103**

**44**



## GILL OUTRIGHT 5051

03-01-2025

5183783

100% AR

**BERWALD PVF OUTRIGHT 221L**  
4723623

KJL/CLZB COMPLETE 7000E  
BERWALD ABIGRACE 1110J

**LMG GILLS MISS 7338 1677**  
4571555

RLC COOPERSTOWN 131F  
LMG MISS 7338

	ProS	HB	GM	CED	BW	WW	YW	Milk	Stay	MB	REA
<b>EPD</b>	117	48	69	10	-0.4	80	132	29	14	0.48	0.28
<b>PCTL (%)</b>	31	59	18	77	77	11	9	16	61	40	24

**Dam's MPPA:** 103

**BW:** 92 lbs.

**WW:** 807 lbs.

He posted 807 lbs adjusted weaning (118 ratio), showing above-average early performance for growth. His EPDs demonstrate balanced genetic merit with growth and performance upside (WW & YW positive) and practical calving ease/gestation traits — making him a strong candidate to add pounds on the ground while keeping functional cowherd genetics.

**Pen 103**

**45**



## GILL OUTRIGHT 5038

02-24-2025

5183761

100% AR

**BERWALD PVF OUTRIGHT 221L**  
4723623

KJL/CLZB COMPLETE 7000E  
BERWALD ABIGRACE 1110J

**LMG MISS DYNETTE**  
4370839

LMG GILL 6331  
LUCHT DYNETTE 1101

	ProS	HB	GM	CED	BW	WW	YW	Milk	Stay	MB	REA
<b>EPD</b>	123	35	88	10	-1.1	75	137	25	12	0.62	0.13
<b>PCTL (%)</b>	24	81	4	74	64	20	5	52	80	20	49

**Dam's MPPA:** 99

**BW:** 95 lbs.

**WW:** 730 lbs.

A pedigree stacked for performance, fertility, and maternal strength. Weaned at 730 lbs (109 ratio). He backs it up with strong growth and carcass EPDs (WW 74, YW 135, Marb 0.63, CW 31) that run above breed averages. With balanced calving ease and yearling strength, this stout, rugged bull is built to sire calves that hit the ground sensible and carry weight to market.

**Pen 103**

# Pasture Photos From Our Customers



Marks Ranch



Senn Ranch



Evenson Ranch



Roseland Ranch



Helms Ranch



Anderson Ranch



Collette Johnson Ranch



Marshall Ranch



Genzler Ranch



Metzinger Ranch



Nagel Ranch



Johnson & Strand Ranch



Todd Ellwein Ranch

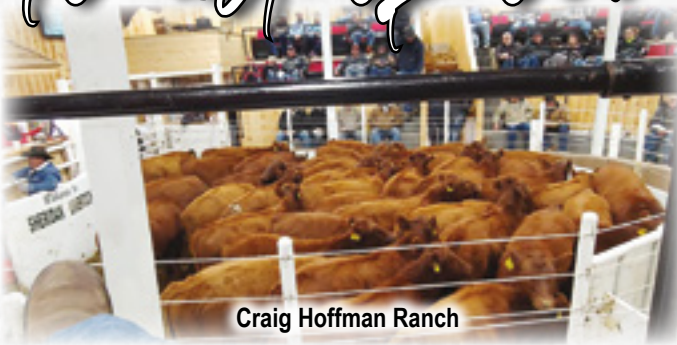


Prince Ranch

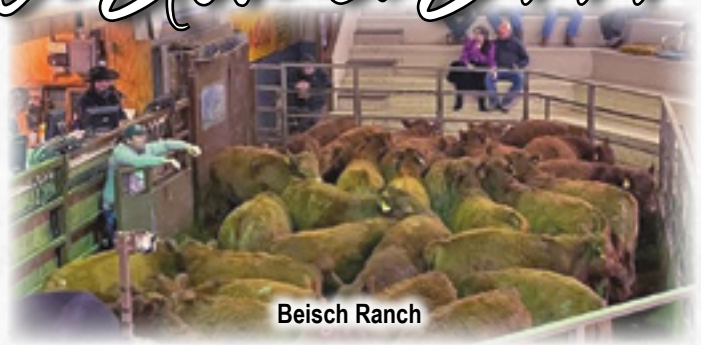


Ramsey Ranch

# To all of our Customers...



Craig Hoffman Ranch



Beisch Ranch



Collette Johnson Ranch



Leibel Ranch



Johnson/Strand Ranch



Heath Morrison Ranch



Schofield Ranch



Evenson Ranch



Droog Ranch



Jones Ranch



Amiotte Ranch



Dave Ryckman Ranch



Suchy Ranch



Edinger Ranch

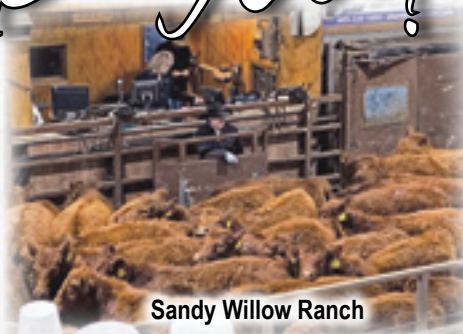
# Thank you!



Ramsey Ranch



Aberle Ranch



Sandy Willow Ranch



Dahners Ranch



Enright Ranch



Genzler Ranch



Lyndale Johnson Ranch



Chris Reeves Ranch



Raile Ranch



Ellefson Ranch



Frank Ranch



Landis Ranch



Clay Claymore Ranch



Bjork Ranch



Kaup Ranch

# 2-Year-Old Bulls with Body!



When we wean all of the April/May calves, we feel the later May and early June born calves are too young to wean. Because of this, we leave them on the cow for a while longer and run them with the fall-born calves. We then run them on grass with the fall calves over the summer and never offer them until this sale. There are some big and powerful bulls in this group that will cover lots of cows.



**46**  **GILL FOREFRONT 2127**  
 06-09-2024 5088691 100% AR

BIEBER FOREFRONT K246 4621275 BIEBER FOREFRONT B281 BIEBER ADELLE 530F

LMG GILLS MISS POTEET 2127 4740151 GILL STOCKMAN 0056 LMG MISS POTEET

	ProS	HB	GM	CED	BW	WW	YW	Milk	Stay	MB	REA
EPD	111	65	46	20	-2.8	71	120	26	18	0.68	-0.19
PCTL (%)	40	27	64	3	32	31	22	51	14	14	96

BW: 74 lbs. WW: 677 lbs.

Twin to lot 85 – This bull has balanced performance with good growth numbers, strong yearling potential, and solid maternal values—backed by a low birth-weight/calving ease package with above-average weaning and yearling figures, plus respectable carcass merit. This is a sire for ranchers trying to raise easy-doing, productive progeny that will fit well in their herd.

Pen 301

**47**  **GILL MERLIN 0129**  
 05-26-2024 5088485 100% AR

WFL MERLIN 018A 1628086 LJC MERLIN T179 WFL COMMITMENT 042Y

EGL STORMY ANGEL 0129 4857352 WFL MERLIN 018A EGL STORMY ANGEL E7159

	ProS	HB	GM	CED	BW	WW	YW	Milk	Stay	MB	REA
EPD	48	-7	56	11	-1.9	75	116	28	6	0.50	0.30
PCTL (%)	98	99	39	72	49	20	29	24	99	37	22

BW: 86 lbs. WW: 662 lbs. Dam's MPPA: 97

Another top quality 2 year old who is a son of Merlin. The Merlin's are known for big bodies that are long made and heavier muscled. This guy is no different.  
 Pen 301



**48** **GILL HOMELAND 6192D**  
 05-26-2024 5088837 100% AR

EGL HOMELAND 0087  
 4373599

SCHULER SUPREMACY 7177E  
 EGL DUCHESS 8007

AHL SAMARIE 6192D  
 3532887

VGW ENHANCER 378  
 TJS SAMARIE Y357

	ProS	HB	GM	CED	BW	WW	YW	Milk	Stay	MB	REA
EPD	79	36	42	8	0.6	71	111	19	12	0.42	0.16
PCTL (%)	84	80	72	87	89	33	39	96	82	52	42

Dam's MPPA: 97

BW: 90 lbs.

WW: 646 lbs.

This two-year-old bull will cover a lot of cows while holding together over the summer.

Pen 301

**49** **GILL RED EAGLE E7178**  
 06-04-2024 5089127 100% AR

EGL GCC RED EAGLE E7194  
 3753947

RED U-2 RIFF 1213C  
 TJS SARABEL A174

EGL PINEMARIE E7178  
 4857372

AHL FLASHBACK 446B  
 BUF CRK PINEMARIE S116

	ProS	HB	GM	CED	BW	WW	YW	Milk	Stay	MB	REA
EPD	51	18	33	9	0.3	69	97	17	11	0.29	0.02
PCTL (%)	98	95	86	82	86	40	69	99	89	85	71

Dam's MPPA: 98

BW: 84 lbs.

WW: 665 lbs.

A top Red Eagle son who is out of one of the Eagle Pass cows that we purchased. We purchased all of the Red Angus cows from Eagle Pass Ranch when they dispersed their Red Angus herd.

Pen 301



Bryan's boys playing ping-pong

# Powerful 2-Year-Old Bulls

50



**GILL LEADING EDGE 7226**

05-26-2024 5088903 100% AR

IDRA LEADING EDGE 1003  
4431269

5L LEADING EDGE 15383-117C  
1DRA DUCHESS 993

LMG MISS 7226  
4571655

LMG MISS 7226

	ProS	HB	GM	CED	BW	WW	YW	Milk	Stay	MB	REA
EPD	131	55	76	11	-1.0	81	132	24	12	0.54	0.07
PCTL (%)	17	44	11	66	66	8	9	66	85	30	61

Dam's MPPA: 102

BW: 80 lbs.

WW: 865 lbs.

**Black Hided**

A good Leading Edge son out of a top cow. We messed up on her paper work as a calf, she is registered as a percentage, but in reality she is 100. But that makes this guy on paper 75% Red Angus.

Pen 302



Lot 51



Lot 52

51



**GILL STOCKMAN 1578**

05-25-2024 5088633 100% AR

GILL STOCKMAN 0056  
4482365

BIEBER CL STOCKMAN E116  
VANWYE OLIVE 737

LMG GILLS MISS BRANDY 1578  
4571389

LMG GILLS HARD DRIVE 7003  
LMG MISS BRANDY 5610

	ProS	HB	GM	CED	BW	WW	YW	Milk	Stay	MB	REA
EPD	88	17	71	13	-1.3	64	112	25	10	0.31	0.12
PCTL (%)	73	96	15	44	59	57	36	59	95	82	51

Dam's MPPA: 96

BW: 72 lbs.

WW: 616 lbs.

Lot 51 has proven Red Angus bloodlines with Gill Stockman and out of Brandy 1578. He has EPDs that combine practical calving ease, strong growth, and maternal strength. Built on functional phenotype and structured to sire market-ready calves and productive daughters that stay in the herd.

Pen 302

52



**GILL SPARTAN 0076**

05-27-2024 5088475 100% AR

BIEBER SPARTAN E639  
3762927

BIEBER SPARTACUS A193  
BIEBER RENEE 477A

EGL DUCHESS 0076  
4857374

KJHT POWER TAKE OFF  
AHL DUCHESS 42W

	ProS	HB	GM	CED	BW	WW	YW	Milk	Stay	MB	REA
EPD	60	26	34	13	0.0	75	112	30	13	0.29	0.01
PCTL (%)	96	91	85	44	83	20	36	16	75	85	73

Dam's MPPA: 105

BW: 80 lbs.

WW: 852 lbs.

Wow, 80 lbs at birth, while weaning off at 852 lbs!!! When you like performance and need to sell heavy calves at weaning, look no further than this guy.

Pen 302

53



## GILL HOMELAND 5599

05-26-2024 5088823 75 AR 25 SM

EGL HOMELAND 0087  
4373599

SCHULER SUPREMACY 7177E  
EGL DUCHESS 8007

LMG MISS LAKOTA 5599  
3523496

HOOK'S YUKON 80Y  
LUCHT LAKOTA 219

	ProS	HB	GM	CED	BW	WW	YW	Milk	Stay	MB	REA
EPD	96	55	41	12	-2.4	71	107	24	13	0.31	0.63
PCTL (%)	62	45	74	54	39	33	46	62	73	82	1

Dam's MPPA: 101

BW: 85 lbs.

WW: 866 lbs.

If you're looking for a bull that will add extra pounds and pass on maternal strength, this is your guy. He's Simmental, came off his mama heavy at weaning, and has the kind of look that makes you confident he'll leave a herd of productive, good-growing calves.

Pen 302

54



## GILL HEAVY DUTY 9109

05-26-2024 5089041 100% AR

RED COCKBURN HEAVY DUTY 518C  
3790641

RED SSS BREAK OUT 114Y  
RED COCKBURN QUEEN 340U

EGL COUNTESS 9109  
4857428

RREDS SENECA 731C  
TJS COUNTESS W9017

	ProS	HB	GM	CED	BW	WW	YW	Milk	Stay	MB	REA
EPD	46	37	9	11	-1.6	61	90	22	13	0.08	0.48
PCTL (%)	99	78	99	64	54	70	81	85	72	99	4

Dam's MPPA: 100

BW: 70 lbs.

WW: 704 lbs.

Another two year old who weaned off over 700 lbs with a near perfect birth weight! Take advantage of this guy!

Pen 302

55



## GILL AMAZING 6591

04-20-2024 5088875 100% AR

VGW AMAZING 117  
4428721

BIEBER CL ATOMIC C218  
VGV MT-STAR 1971

LMG MISS EOLA 6591  
3556381

LMG GILLS VIN DIESEL 7611  
LMG MISS EOLA 3354

	ProS	HB	GM	CED	BW	WW	YW	Milk	Stay	MB	REA
EPD	74	23	51	7	1.2	89	146	27	13	0.23	0.57
PCTL (%)	88	92	52	91	93	2	2	36	78	92	2

Dam's MPPA: 106

BW: 90 lbs.

WW: 848 lbs.

Here's a bull built to perform. He weaned heavy and kept pushing gain, with EPDs showing strong growth for both weaning and yearling weights. Calving ease is solid and his daughters should make productive cows. Add in good carcass potential and he's the kind that delivers pounds and quality straight to the pen. He was supposed to sell last fall as his birthdate falls into that group, but last summer the two groups of bulls got mixed and we missed this guy.

Pen 302

## View the Auction Live! Bid Online... you're ringside right at your desk!

Buying online is as easy as 1, 2, 3...

1. Create an account at [www.DVAuction.com](http://www.DVAuction.com) under the "Register" tab
2. Apply for bidding approval by clicking on the "details" tab at least 24 hours prior to the auction - a DV representative will notify you once you have been approved.
3. Tune in for the sale to make your purchases!

High Speed internet is required for successful bidding-be sure to check the log-time monitor in the top left corner to ensure real-time broadcasts.

Proxy-bidding - if you can't make time to watch the sale, register a proxy bid and let our system represent your bid while you're away. Look for the "proxy bid" tab on the auction listing, and fill in your maximum bids. We'll handle the rest!

For General Questions Please contact Our Office: 402-316-5460 or [support@dvauction.com](mailto:support@dvauction.com)



**DVAuction**  
Broadcasting Real-Time Auctions

# GILL RED ANGUS



**56**  **GILL AMAZING 1557**  
**04-15-2024**      **5088619**      **93.8 AR 6.2 XX**

**VGW AMAZING 117**  
4428721

BIEBER CL ATOMIC C218  
VGW MT-STAR 1971

**LMG GILLS MISS 7329 1557**  
4571347

BAR M LAKOTA 9227  
LMG MISS 7329

	ProS	HB	GM	CED	BW	WW	YW	Milk	Stay	MB	REA
<b>EPD</b>	120	23	97	10	-1.2	72	129	28	10	0.56	0.36
<b>PCTL (%)</b>	27	93	1	78	62	28	11	27	92	27	11

**Dam's MPPA:** 103

**BW:** 75 lbs.

**WW:** 618 lbs.

With proven Red Angus lines, sired by Amazing. He has balanced EPDs that combine calving ease, growth and maternal strength. He's bred to leave profitable, functional calves on the ground and productive daughters in your herd — built for real ranch performance. He was supposed to sell last fall as his birthdate falls into that group, but last summer the two groups of bulls got mixed and we missed this guy.

**Pen 302**

**57**  **GILL HOMELAND 1557**  
**05-25-2024**      **Commercial**      **100% AR**

**EGL HOMELAND 0087**  
4373599

SCHULER SUPREMACY 7177C  
EGL DUCHESS 8007

**PUREBRED RED ANGUS COW**

**BW:** 84 lbs.

**WW:** 685 lbs.

Another commercial bull with a great look. We was born at 82 lbs and weaned off at 710 lbs. You will like him!

**Pen 302**

**58**  **GILL LEADING EDGE 0125**  
**06-01-2024**      **Commercial**      **100% AR**

**IDRA LEADING EDGE 1003**  
4431269

5L LEADING EDGE 15383-117C  
IDRA DUCHESS 993

**PUREBRED RED ANGUS COW**

**BW:** 86 lbs.

**WW:** 705 lbs.

**Black Hided**

A good looking 2 year old bull with a lot of power as he weaned off over 700 lbs and was born at 86 lbs.

**Pen 302**

# Moderate Framed Fall Bulls

**59**  **GILL PLAYMAKER 1572**  
 08-20-2024 5154565 100% AR

WSM PLAYMAKER 1080J 4468115  
 PIE QUARTERBACK 789  
 BIEBER PRIMROSE 107W

LMG GILLS MISS 7309 1572 4571377  
 3SCC DOMAIN A163  
 LMG MISS 7309

	ProS	HB	GM	CED	BW	WW	YW	Milk	Stay	MB	REA
EPD	118	40	78	6	2.5	84	138	22	17	0.51	0.27
PCTL (%)	30	74	9	96	98	5	5	81	26	35	25

BW: 86 lbs. WW: 653 lbs. Dam's MPPA: 97

A Playmaker out of a Domain daughter. Playmaker is a top Quarterback son who has been very well received. This is a paternal brother to the high selling bull in our December sale last fall.

Pen 204



**60**  **GILL JUMPSTART 4052**  
 09-17-2024 5147751 100% AR

BIEBER JUMPSTART J137 4463653  
 BIEBER CL ENERGIZE F121  
 BIEBER GALLEE 390G

VANWYE OLIVE 242 4786074  
 BIEBER CL STOCKMAN E116  
 VANWYE OLIVE 737

	ProS	HB	GM	CED	BW	WW	YW	Milk	Stay	MB	REA
EPD	104	22	82	10	-0.7	89	152	31	11	0.54	0.56
PCTL (%)	49	93	6	76	73	2	1	9	31	30	2

BW: 63 lbs. WW: 765 lbs. Dam's MPPA: 104

This bull's performance profile shows he's bred to put pounds on calves and keep them growing (Top 1 for Yearling and 2 for weaning) with a balanced calving and maternal picture makes him useful in both a cow herd and a feeder calf. He's the kind that adds weight without making calving hard and helps build consistent, market-ready cattle.

Pen 204

**61**  **GILL HOMELAND 8894**  
 08-20-2024 5154601 100% AR

EGL HOMELAND 0087 4373599  
 SCHULER SUPREMACY 7177E  
 EGL DUCHESS 8007

LMG MISS MORNING GLORY 8894 4097354  
 LMG GILL 6287  
 CBR MORNING GLORY 644-87

	ProS	HB	GM	CED	BW	WW	YW	Milk	Stay	MB	REA
EPD	79	59	20	14	-1.2	59	85	18	16	0.26	0.12
PCTL (%)	84	38	97	36	62	78	88	98	33	89	51

Dam's MPPA: 98

BW: 76 lbs.

WW: 651 lbs.

This guy brings the kind of performance you're after in a commercial outfit — he weaned off heavy and kept the growth going. Plus there's enough maternal strength in his numbers to raise replacement females that stay in your herd. Bottom line: he'll help put pounds on your calves and raise cows that do their job year after year.

Pen 204



*See You at the Ranch on April 22!*

62



## GILL ASSET 4060

10-05-2024 5147791 100% AR

PIE ASSET 1276  
453565

RED MRLA RESOURCE 137E  
PIE RUBY 520

VANWYE MARY KAY 22Y  
1472815

5L NORSEMAN KING 229I  
VANWYE MARY LOU 81R

	ProS	HB	GM	CED	BW	WW	YW	Milk	Stay	MB	REA
EPD	115	70	44	11	1.2	65	108	10	17	0.25	0.08
PCTL (%)	34	19	68	71	93	55	44	24	24	90	59

BW: 72 lbs. WW: 768 lbs. Dam's MPPA: 101

A steady, no-nonsense kind of bull. The growth numbers show he'll sire calves that push the scale at weaning. Calving ease is right where it needs to be, so you're not trading sleep for performance, and his maternal side keeps daughters in the herd that can raise a calf and stay sound. Add in some carcass merit, and he's the type that fits a commercial outfit that wants pounds, consistency, and cattle that hold together.

Pen 204



Lot 62

63



## GILL PROPULSION 4045

09-02-2024 5147745 100% AR

BB PROPULSION 9096  
4169122

PIE ONE OF A KIND 777  
BB MS GINNIE 6256

VW MS EFFECTIVE 023  
4467921

SCHIEFELBEIN EFFECTIVE 61  
VW MISS PEACEMAKER 727

	ProS	HB	GM	CED	BW	WW	YW	Milk	Stay	MB	REA
EPD	110	45	65	13	-2.6	72	109	28	11	0.72	-0.01
PCTL (%)	40	64	23	53	35	30	42	24	87	11	77

Dam's MPPA: 101

BW: 68 lbs.

WW: 668 lbs.

Take a look at this top Propulsion son who is out of a good Schiefelbein Effective daughter. This guy has outstanding numbers, a great look to him, very athletic, and will work great for you!

Pen 204

64



## GILL ASSET 4055

09-23-2024 5139013 100% AR

PIE ASSET 1276  
4543565

RED MRLA RESOURCE 137E  
PIE RUBY 520

VAN WYE OCTAVIA 25A  
3565314

BROWN COVENANT U754  
COLEY'S 5101 COUNTESS 760T

	ProS	HB	GM	CED	BW	WW	YW	Milk	Stay	MB	REA
EPD	110	27	83	5	0.7	66	118	26	13	0.39	-0.04
PCTL (%)	41	90	6	96	90	49	25	51	77	63	82

BW: 71 lbs. WW: 749 lbs. Dam's MPPA: 93

His performance profile shows he's built to work in a real-world herd. He's got good weaning (about +67) and strong yearling growth (+119), so his calves should hit the ground and keep putting on weight without sacrificing calving ease.

Pen 204



Lot 64

**65** **GILL CONFIDENT 4061**  
 10-08-2024 5139017 100% AR

**BERWALD CONFIDENT 2044** BROWN CRSB CONFIDENCE G1410  
 4687927 BERWALD JAYLO 0007

**HGF 68** MLF SAMURAI 327  
 3572634 VAN WYE CHERRY 50W

	ProS	HB	GM	CED	BW	WW	YW	Milk	Stay	MB	REA
<b>EPD</b>	32	2	30	15	-1.4	76	111	30	9	0.42	0.28
<b>PCTL (%)</b>	99	99	89	24	58	19	38	16	97	52	24

**Dam's MPPA:** 102  
**BW:** 72 lbs.  
**WW:** 780 lbs.

This guy has real performance behind him. He came off strong weighing 780 lbs at weaning and his EPDs back that up with solid growth figures for both weaning and yearling.  
**Pen 204**

**66** **GILL PROPULSION 4051**  
 09-17-2024 5147809 100% AR

**BB PROPULSION 9096** PIE ONE OF A KIND 777  
 4169122 BB MS GINNIE 6256

**VANWYE MARY 643** BIEBER HARD DRIVE Y120  
 3760019 VANWYE MARY KAY 22Y

	ProS	HB	GM	CED	BW	WW	YW	Milk	Stay	MB	REA
<b>EPD</b>	64	25	38	10	-1.5	76	115	28	9	0.41	0.06
<b>PCTL (%)</b>	94	91	79	74	56	18	31	26	96	54	63

**BW:** 72 lbs. **WW:** 695 lbs. **Dam's MPPA:** 104

A Propulsion son who had a 72 lbs birth weight and weaned off at nearly 700 lbs! What more could you really want?

**Pen 204**



**67** **GILL MULBERRY 4048**  
 09-25-2024 5154573 100% AR

**RED FINE LINE MULBERRY 26P** RED COMPASS MULBERRY 449M  
 1151261 RED DUS FAYETTE 8G

**LMG MISS MAXINE 4048** LMG GILLS VIN DIESEL 7611  
 1743432 LMG MISS MAXINE 2028

	ProS	HB	GM	CED	BW	WW	YW	Milk	Stay	MB	REA
<b>EPD</b>	84	79	6	12	-0.7	64	100	20	20	0.03	-0.10
<b>PCTL (%)</b>	78	10	99	54	73	61	61	93	5	99	89

**Dam's MPPA:** 100  
**BW:** 73 lbs.  
**WW:** 660 lbs.

He stems from Red Compass Mulberry 449M on the top side — a line known for functional performance and proven genetics — and out of LMG Gills Vin Diesel 7611 with LMG Miss Maxine 4048 on the dam side, adding maternal power and structural soundness to his pedigree. His EPD profile blends practical calving ease with growth genetics, and maternal strength that fit real ranch conditions.

**Pen 204**

**68** **GILL HOMELAND 1596**  
 08-15-2024 5154543 100% AR

**EGL HOMELAND 0087** SCHULER SUPREMACY 7177E  
 4373599 EGL DUCHESS 8007

**LMG MISS EOLA 1596** BIEBER CL STOCKMARKET E119  
 4571417 LMG MISS EOLA 9578

	ProS	HB	GM	CED	BW	WW	YW	Milk	Stay	MB	REA
<b>EPD</b>	93	3	89	3	0.1	77	120	19	7	0.72	0.29
<b>PCTL (%)</b>	67	99	3	99	84	16	23	96	99	11	23

**Dam's MPPA:** 97  
**BW:** 80 lbs.  
**WW:** 648 lbs.

He has two proven sires in his pedigree, Homeland and Stock Market. With these 2, you know his calves will be outstanding and his daughters will shine!!!

**Pen 204**

**69**  **GILL STOCKMARKET 4057**  
**09-27-2024** **5147785** **100% AR**

**BIEBER CL STOCKMARKET E119** **PIE STOCKMAN 4051**  
 3751659 **BIEBER CL ADELLE 475C**

**VANWYE PENNY 027** **RREDS PATHFINDER F811**  
 4579401 **VANWYE PENNY 335**

	ProS	HB	GM	CED	BW	WW	YW	Milk	Stay	MB	REA
<b>EPD</b>	115	39	76	14	-3.1	71	120	25	12	0.70	0.31
<b>PCTL (%)</b>	34	76	10	33	26	33	22	56	83	12	57

**Dam's MPPA: 97**  
**BW: 61 lbs.**  
**WW: 603 lbs.**

Take a look at this 61 lbs birth weight fall born bull. He is Stockmarket son out of a Pathfinder daughter. He has a great look to him with superb numbers.

**Pen 204**

**70**  **GILL SPARTACUS 6416**  
**09-01-2024** **Commercial**

**LMG GILLS SPRATACUS 1036** **BIEBER SPARTACUS A193**  
 1617230 **DHX MAGGIE ROSE 241F**

**PUREBRED RED ANGUS COW**

**BW: 84 lbs.**  
**WW: 695 lbs.**

A commercial bull who has the look, power, and eye appeal you need! He was born at a perfect 80 lbs, while weaning off at 720 lbs. Remember, pounds are king!

**Pen 204**

**71**  **GILL PLAYMAKER 3339**  
**08-09-2024** **5154625** **100% AR**

**WSM PLAYMAKER 1080J** **PIE QUARTERBACK 789**  
 4468115 **BIEBER PRIMROSE 107W**

**LMG MISS BRANDY 3339** **FEDDES COMANDER Y104**  
 1668271 **LMG MISS BRANDY 6314**

	ProS	HB	GM	CED	BW	WW	YW	Milk	Stay	MB	REA
<b>EPD</b>	126	50	76	11	1.1	74	123	25	16	0.51	0.28
<b>PCTL (%)</b>	21	55	10	72	93	22	17	57	33	35	24

**Dam's MPPA: 103**  
**BW: 60 lbs.**  
**WW: 680 lbs.**

Lot 71 is a very well made Playmaker son with good eye appeal and performance. His dam is a Commander daughter. We purchased Commander from Feddes Red Angus. He has a great look, out of a good cow, and has super numbers.

**Pen 204**

## Fall Born Calving Ease Bulls



**72**  **GILL JUMPSTART 4035**  
**08-10-2024** **5147739** **100% AR**

**BIEBER JUMPSTART J137** **BIEBER CL ENERGIZE F121**  
 4463653 **BIEBER GALLEE 390G**

**VANWYE MS MONUMENT 226** **FRITZ MONUMENT 618G**  
 4786060 **VANWYE MS ARSON 704**

	ProS	HB	GM	CED	BW	WW	YW	Milk	Stay	MB	REA
<b>EPD</b>	128	67	61	18	-4.5	78	131	29	20	0.56	0.32
<b>PCTL (%)</b>	19	24	29	8	10	14	9	23	4	27	17

**BW: 50 lbs.** **WW: 641 lbs.** **Dam's MPPA: 97**

This is a thick rear quarter, deep made and long bodied that bull will grab your eye sale day. He was born small, but grew like a weed. His calves will calve easy and grow for you. He gets his power from his sire Jump Start. The feeders will love this guys calves and his daughters will make great cows.

**Pen 205**

**73** **GILL SPARTACUS 1647**  
 08-24-2024 5154555 100% AR

LMG GILLS SPRATACUS 1036 BIEBER SPARTACUS A193  
 4566263 DHX MAGGIE ROSE 241F

LMG GILLS MISS STORMY 1647 4MC OPTIMISM 482  
 4571505 LMG MISS STORMY 0414

	ProS	HB	GM	CED	BW	WW	YW	Milk	Stay	MB	REA
EPD	98	69	29	16	-3.2	52	72	26	20	0.40	0.10
PCTL (%)	59	22	90	21	26	93	97	50	5	56	55

Dam's MPPA: 98  
 BW: 67 lbs.  
 WW: 651 lbs.

Take a look at this light birth weight Spartacus son. He has a lot of calving ease bred into him, going back to Optimisim as well.

Pen 205

**74** **GILL JUMPSTART 4039**  
 08-21-2024 5147749 100% AR

BIEBER JUMPSTART J137 BIEBER CL ENERGIZE F121  
 4463653 BIEBER GALLEE 390G

VANWYDE MARY 228 H2R PROFITBUILDER B403  
 4786068 VANWYDE MARY 981

	ProS	HB	GM	CED	BW	WW	YW	Milk	Stay	MB	REA
EPD	86	48	38	18	-4.2	71	117	29	14	0.51	0.11
PCTL (%)	76	58	79	11	13	33	28	20	61	35	53

BW: 60 lbs. WW: 666 lbs. Dam's MPPA: 99

A powerful Jumpstart son who is backed with solid EPD numbers, good calving ease, respectable growth and balanced maternal traits that'll make him a practical choice on the cows. A bull built for performance from the pasture to the feeder.

Pen 205



**75** **GILL HOMELAND 1585**  
 09-05-2024 5154621 100% AR

EGL HOMELAND 0087 SCHULER SUPREMACY 7177E  
 4373599 EGL DUCHESS 8007

LMG GILLS MISS JESSE 1585 HBR LINEDRIVE 663  
 4571401 LMG MISS 7224

	ProS	HB	GM	CED	BW	WW	YW	Milk	Stay	MB	REA
EPD	113	66	47	16	-1.3	64	94	24	16	0.57	-0.13
PCTL (%)	37	25	61	21	59	61	74	72	30	26	92

BW: 68 lbs. WW: 666 lbs. Dam's MPPA: 98

He goes back to Schuler Supremacy 7177E on the top side — a bull known for combining structure and performance — and out of LMG Gills Miss Jesse 1585, adding maternal depth and functional female genetics. His EPDs show strong calving ease and birth weight and growth genetics that support a balanced, market-ready calf, and maternal strength that fit commercial cowherd demands. Backed by carcass traits that add quality potential, he's built on proven Red Angus lines and bred to put performance and productive daughters into your herd.

Pen 205



## GILL RED ANGUS

*You buy our bulls, we bid on your calves!*

# GILL RED ANGUS

## 76 **GILL COWBOY 4064** 11-07-2024 5139019 100% AR

4MC THE COWBOY WAY 970 4184814  
PIE THE COWBOY KIND 343  
4MC TINY 5166

VANWYE MINOLA 927 4329385  
BUF CRK THE RIGHT KIND U199  
RED SSS MINOLA 2U

	ProS	HB	GM	CED	BW	WW	YW	Milk	Stay	MB	REA
EPD	75	68	7	17	-2.9	53	85	28	19	0.11	-0.03
PCTL (%)	87	22	99	15	30	90	87	27	9	98	80

Dam's MPPA: 99  
BW: 70 lbs.  
WW: 631 lbs.

A bull that shows real-world performance. He's got solid growth that tells you his calves should hit the ground and keep gaining. He's not some extreme outlier, just a dependable bull with the kind of performance you can count on in a commercial herd.

Pen 205

## 77 **GILL DOMAIN 4036** 08-20-202 5147817 100% AR

3SCC DOMAIN A163 1619642  
BECKTON DOMINOR T122 Z1  
3SCC EUCLA X723

VANWYE PRINCESS GRACE 115 4579371  
BIEBER LET'S ROLL G336  
C C L PRINCESS 12T

	ProS	HB	GM	CED	BW	WW	YW	Milk	Stay	MB	REA
EPD	109	48	61	16	-4.4	54	85	28	16	0.60	0.24
PCTL (%)	42	58	29	20	11	89	87	28	34	23	29

BW: 60 lbs.  
WW: 621 lbs.

Gill Domain 4036 is a strong and powerful bull who has solid EPDs, built for easy calving and dependable growth. A bull like this is the kind you want working on your herd, passing on good structure and performance from pasture to feedlot.

Pen 205

## 78 **GILL ENERGIZE 4038** 08-18-202 5147731 100% AR

BIEBER ENERGIZE K285 4621091  
BIEBER CL ENERGIZE F121  
BIEBER SURPRISE 515E

VANWYE SPLIT ROCK 3501922  
MLF SAMURAI 327  
VANWYE SPLIT ROCK 317

	ProS	HB	GM	CED	BW	WW	YW	Milk	Stay	MB	REA
EPD	116	80	36	19	-4.8	64	102	27	20	0.41	-0.08
PCTL (%)	33	9	82	6	8	60	58	38	3	54	87

BW: 62 lbs. WW: 677 lbs. Dam's MPPA: 99

Check out this high powered calving ease Energize son. Keep the daughters as well as the Split Rock cow line is as good as it gets!

Pen 205



## 79 **GILL PROSPERITY 2012** 09-22-2024 5154603 100% AR

PIE PROSPERITY 1235 4542591  
KJL/CLZB COMPLETE 7000E  
MS RAMBO TUO 5318

PDG WILLOW LARKABA 2012 4342017  
PIE LEGEND 468  
PDG WILLOW LARKARBA 769

	ProS	HB	GM	CED	BW	WW	YW	Milk	Stay	MB	REA
EPD	156	88	68	17	-3.6	75	135	25	21	0.64	-0.24
PCTL (%)	4	5	19	13	19	20	7	57	2	18	97

Dam's MPPA: 99  
BW: 71 lbs.  
WW: 697 lbs.

Serious bull buyers need to take a look here! First study his pedigree and then his numbers. You can't hardly dream them up any better! Then take a look at the bull. Outstanding in every category! He is impressive and you will be impressed!

Pen 205

# Moderate Framed 2-Year-Old Bulls

**80**  **GILL HOMELAND 6517**  
 05-19-2024 5102503 100% AR

EGL HOMELAND 0087 SCHULER SUPREMACY 7177E  
 4373599 EGL DUCHESS 8007

LMG MISS ROXIE 6517 LMG GILLS STATEMENT 2066  
 3711891 LMG MISS ROXIE 3369

	ProS	HB	GM	CED	BW	WW	YW	Milk	Stay	MB	REA
EPD	102	101	1	19	-5.8	47	70	25	23	0.34	-0.41
PCTL (%)	53	1	99	5	3	97	97	52	1	77	99

BW: 84 lbs. WW: 699 lbs. Dam's MPPA: 98

Take a look at the calving ease and birth weight numbers. Sleep all night with this guy!

Pen 303



**81**  **GILL CARSON CITY 2157**  
 06-07-2024 5088709 100% AR

KUHNS CARSON CITY K049 RED SSS CARSONCITY 710G  
 4678193 KUHNS ABIGAIL A036

LMG GILLS MISS TINA 2157 LMG GILLS HARD DRIVE 7005  
 4740199 LMG MISS TINA 9634

	ProS	HB	GM	CED	BW	WW	YW	Milk	Stay	MB	REA
EPD	135	67	67	14	-1.7	68	115	27	18	0.51	0.03
PCTL (%)	14	23	20	35	52	43	31	38	12	35	69

Dam's MPPA: 103

BW: 76 lbs.

WW: 745 lbs.

A good Carson City son who is out of a first calf heifer that did everything right. He has the EPDs that are above average across the board. You will like what this guy will do for you.

Pen 303



**82**  **GILL GUIDANCE H855**  
 05-26-2024 5089137 100% AR

EGL GUIDANCE 9117 MCD SPUR 6111  
 4208972 AHL DUCHESS 427B

EGL AMBER H855 RED MOOSE CREEK WESTON 23B  
 4857344 EGL AMBER E7249

	ProS	HB	GM	CED	BW	WW	YW	Milk	Stay	MB	REA
EPD	112	39	73	14	-2.5	60	99	19	9	0.53	-0.12
PCTL (%)	38	76	13	37	37	75	63	97	96	32	91

BW: 75 lbs.

WW: 723 lbs.

Dam's MPPA: 102

Born at 75 lbs and weaned off at 723 lbs. We purchased his dam when we purchased all of Eagle Pass Ranch Red Angus cows a few years ago. They fit in nice with our cow herd, as they are big bodied, long and powerful.

Pen 303

# GILL RED ANGUS

83



## GILL FOREFRONT 21277

06-09-2024 5222093 100% AR

BIEBER FOREFRONT K246  
4621275

BIEBER FOREFRONT B281  
BIEBER ADELLE 530F

LMG GILLS MISS POTEET 2127  
4740151

GILL STOCKMAN 0056  
LMG MISS POTEET

	ProS	HB	GM	CED	BW	WW	YW	Milk	Stay	MB	REA
EPD	100	47	53	15	-2.8	66	110	25	16	0.61	-0.06
PCTL (%)	56	61	45	28	32	49	41	52	39	21	84

BW: 72 lbs. WW: 667 lbs.

A front-end Forefront son out of a first calf heifer. He gets her done in a nice package, while keep calving ease and performance in check!

Pen 303



Lot 83

84



## LMG GILLS HEAVY DUTY 7146

05-28-2024 5228155 100% AR

RED COCKBURN HEAVY DUTY 518C  
3790641

RED SSS BREAK OUT 114Y  
RED COCKBURN QUEEN 340U

EGL HI HO E7146  
4857326

PIE CODE RED 9058  
CCR HI HO 118-313

	ProS	HB	GM	CED	BW	WW	YW	Milk	Stay	MB	REA
EPD	28	12	16	7	1.6	67	97	22	10	0.11	0.12
PCTL (%)	99	97	98	92	95	48	68	85	94	98	51

BW: 82 lbs. WW: 688 lbs.

A big-bodied, long-made bull that will take your commercial cows where they need to go. He has a great look to him and he is out of a super cow!

Pen 303



Lot 84

85



## GILL CARSON CITY 2210

05-14-2024 5088733 100% AR

KUHNS CARSON CITY K049  
4678193

RED SSS CARSONCITY 710G  
KUHNS ABIGAIL A036

LMG GILLS MISS BLOCKANA 0545  
4708377

WILLOW FRANCHISE 1638-1853  
LMG MISS BLOCKANA

	ProS	HB	GM	CED	BW	WW	YW	Milk	Stay	MB	REA
EPD	143	82	61	9	-0.7	77	129	31	19	0.56	0.01
PCTL (%)	9	8	29	83	73	15	11	10	10	27	73

Dam's MPPA: 105

BW: 80 lbs.

WW: 777 lbs.

A well made 2 year old that will cover a lot of cows for you. He is a Carson City son who has a great look to him!

Pen 303

86



## GILL AMAZING 1517

04-15-2024 5088601 100% AR

VGW AMAZING 117  
4428721

BIEBER CL ATOMIC C218  
VGW MT-STAR 1971

LMG GILLS MISS SARA 1517  
4571293

4MC OPTIMISM 482  
LMG MISS SARA 4157

	ProS	HB	GM	CED	BW	WW	YW	Milk	Stay	MB	REA
EPD	133	78	55	14	-0.3	76	123	29	20	0.23	0.40
PCTL (%)	15	11	40	41	79	17	18	18	4	92	8

Dam's MPPA: 103

BW: 80 lbs.

WW: 662 lbs.

A very good 2 year old bull. He really should have been in the December sale. But over the summer, for a few weeks the fall and late born bulls that were on grass, were nose to nose with the bulls we sold in December. Well, can you imagine it, they busted the fence down between them. We sorted as good as we could, but we missed this guy and didn't realize it until we got these guys in off grass in December.

Pen 303

87



**GILL HOMELAND 5597**

02-02-2024

Commercial

EGL HOMELAND 0087  
4373599

SCHULER SUPREMACY 7177E  
EGL DUCHESS 8007

PURE BRED RED ANGUS COW

BW: 86 lbs.

WW: 700 lbs.

Pen 303

We have 2 non-papered sons of EGL Homeland out of a couple top notch cows. The quality is outstanding but they sell without papers. They will work for you and do a great job!



Cayne doing business

88



**GILL HOMELAND 2136**

05-26-2024

Commercial

EGL HOMELAND 0087  
4373599

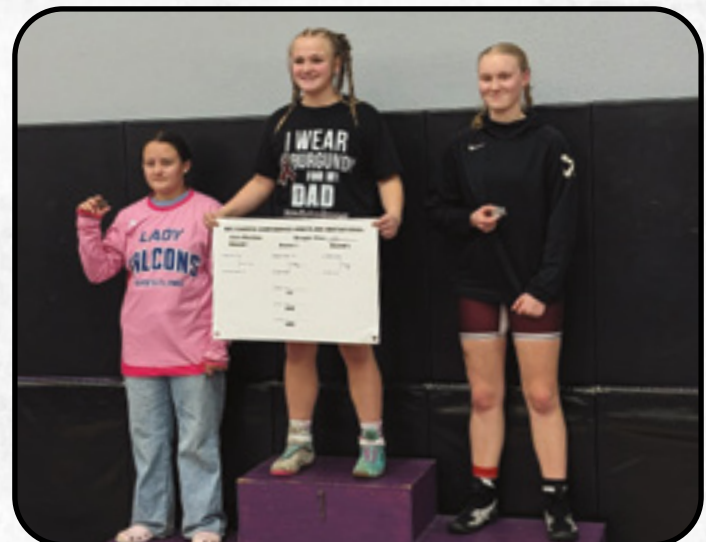
SCHULER SUPREMACY 7177E  
EGL DUCHESS 8007

PURE BRED RED ANGUS COW

BW: 88 lbs.

WW: 685 lbs.

Pen 303



Evy (far right) on the medal podium for wrestling



Kendyl (#7) and Brent in the team picture



Quayde (2nd from left) on the wrestling podium

# Yearling Bulls With Power

**89**



**GILL FLASHDRIVE 5013**

**03-07-2025 5131419 100% AR**

**BIEBER FLASHDRIVE G266**  
4140008

BIEBER HARD DRIVE E640  
BIEBER FLOWER 312E

**VANWYE MINOLA 010**  
4464811

BUF CRK THE RIGHT KIND U199  
RED SSS MINOLA 2U

	ProS	HB	GM	CED	BW	WW	YW	Milk	Stay	MB	REA
EPD	143	64	79	11	0.4	76	122	26	17	0.72	0.39
PCTL (%)	9	29	8	70	87	17	19	43	20	11	9

**Dam's MPPA: 100**  
**BW: 74 lbs.**  
**WW: 637 lbs.**

Starting a new pen of yearlings with the good Flash Drive son. He has great numbers, a super look to him and out of a top Right Kind daughter.

**Pen 104**

**90**



**GILL STOCKYARD 5028**

**02-15-2025 5183831 100% AR**

**LEM STOCKYARD 2001 ET**  
4659179

BIEBER CL STOCKMARKET E119  
LEM ONEKIND 934 ET

**RTE 9 TJ DYNETTE**  
3786511

TWG TOMMY JACK 166A  
LMG MISS DYNETTE 2637

	ProS	HB	GM	CED	BW	WW	YW	Milk	Stay	MB	REA
EPD	76	55	21	13	-3.0	63	98	21	15	0.39	-0.16
PCTL (%)	86	44	96	44	29	63	66	88	46	63	94

**Dam's MPPA: 97**  
**BW: 95 lbs.**  
**WW: 691 lbs.**

Backed by strong Red Angus pedigree on both sire and dam sides, this bull carries the heritage of functional, rugged genetics that stand up on the range. He's muscular through the top and hip, stout in the chest, and clean-made on his feet and legs, with the kind of body style that works in real country — plenty of muscle, good bone, and correct structure for years of service.

**Pen 104**

**91**



**GILL MOVIN ON 5005**

**02-11-2025 5147755 100% AR**

**HRP RAISLAND QUARTERBAK 2704**  
4637595

PIE QUARTERBACK 789  
RAISLAND REBELLA 810-630

**VANWYE FRAN 103**  
4579405

PIE CINCH 4126  
VANWYE FRAN 814

	ProS	HB	GM	CED	BW	WW	YW	Milk	Stay	MB	REA
EPD	99	46	53	10	0.3	89	143	26	12	0.40	0.00
PCTL (%)	57	63	45	75	86	2	3	42	82	56	75

**BW: 65 lbs. WW: 667 lbs. Dam's MPPA: 99**

A good Quarterback son with the calving ease and maternal that you need to move your program forward.

**Pen 104**



**92**



**GILL FIRESTORM 5004**

**02-11-2025 5147779 100% AR**

**PZC TMAS FIRESTORM 1800 ET**  
1472101

RED SIX MILE SAKIC 832S  
GT CITA 4060

**MANN MS R017 904 Y53**  
1484333

BUF CRK LANCER R017  
FSR N.KING ESTHER-ET 907W

	ProS	HB	GM	CED	BW	WW	YW	Milk	Stay	MB	REA
EPD	55	36	20	12	-1.3	69	100	28	11	0.20	-0.04
PCTL (%)	97	80	97	55	59	38	61	26	88	95	82

**Dam's MPPA: 102**  
**BW: 80 lbs.**  
**WW: 621 lbs.**

He brings practical performance backed by EPDs that combine calving ease, growth, and maternal power. Built to put market-ready calves on the ground and productive daughters in your herd.

**Pen 104**

**93**  **GILL QUARTERBACK 5009**  
**02-18-2025** **5131403** **100% AR**

HRP RAISLAND QUARTERBAK 2704 4637595  
 PIE QUARTERBACK 789  
 RAISLAND REBELLA 810-630

VANWYE SARA 203 4726389  
 PELTON WIDELOAD 788  
 MLF SARA 606

	ProS	HB	GM	CED	BW	WW	YW	Milk	Stay	MB	REA
EPD	59	28	31	12	1.0	71	115	30	12	0.27	0.10
PCTL (%)	96	89	88	60	92	31	30	15	83	88	55

**94**  **GILL FOREFRONT 5061**  
**03-14-2025** **5183801** **100% AR**

BIEBER FOREFRONT K246 46121275  
 BIEBER FOREFRONT B281  
 BIEBER ADELLE 530F

LMG 3437 4928272  
 VGV AMAZING 117  
 LMG MISS VERDALE 9573

	ProS	HB	GM	CED	BW	WW	YW	Milk	Stay	MB	REA
EPD	138	63	74	9	1.0	91	150	29	19	0.46	0.25
PCTL (%)	12	29	12	83	92	1	1	16	7	45	28



Lot 95

**96**  **GILL CARSON CITY 5064**  
**03-14-2025** **5183807** **100% AR**

KUHNS CARSON CITY K049 4678193  
 RED SSS CARSONCITY 710G  
 KUHNS ABIGAIL A036

LMG 3384 4928178  
 LMG GILLS LANCER 8321  
 LMG GILLS MISS STORMY 1633

	ProS	HB	GM	CED	BW	WW	YW	Milk	Stay	MB	REA
EPD	94	45	49	10	0.5	73	122	26	13	0.34	0.10
PCTL (%)	65	65	54	76	88	27	19	46	71	77	55

Dam's MPPA: 100  
 BW: 68 lbs.  
 WW: 633 lbs.

An eye pleasing Quarterback son out of the good Sara cow line. This line is made for power and maternal!

Pen 104

Dam's MPPA: 106  
 BW: 89 lbs.  
 WW: 904 lbs.

Big numbers that mean weaned calves with muscle and performance that starts early. His EPDs show extra growth with a practical calving ease profile and balanced maternal strength — genetics built to sire calves that hit the ground running and daughters that stay in your herd.

Pen 104

**95**  **LMG GILLS CARSON CITY 3314**  
**03-15-2025** **5216505** **100% AR**

KUHNS CARSON CITY K049 4678193  
 RED SSS CARSONCITY 710G  
 KUHNS ABIGAIL A036

LMG MISS SUSETTE 3314 1667928  
 LMG GILLS WIDE SPREAD 0904  
 LMG MISS SUSETTE 8020

	ProS	HB	GM	CED	BW	WW	YW	Milk	Stay	MB	REA
EPD	101	64	37	14	-1.8	58	100	23	17	0.29	-0.06
PCTL (%)	53	29	80	37	50	80	61	75	29	85	84

BW: 78 lbs. WW: 745 lbs. Dam's MPPA: 99

LMG Gills Carson City 3314 offers a balanced performance profile reflecting functional performance that works in real world conditions. His EPDs underline his practical value with moderate calving ease, above-average growth genetics, and solid maternal merit — traits that help produce profitable, productive daughters and calves that hit the ground running.

Pen 104

Dam's MPPA: 102  
 BW: 85 lbs.  
 WW: 826 lbs.

5064 posted an 826 lb adjusted weaning, showing above-average growth while on the cow. His EPDs offer a practical package with moderate calving ease (CED:+10, BW:+0.3) paired with strong growth genetics.

Pen 104

# GILL RED ANGUS

97



**LMG 5058**

03-12-2025

5183795

100% AR

**KUHNS CARSON CITY K049**  
4678193

RED SSS CARSONCITY 710G  
KUHNS ABIGAIL A036

**LMG 3428**  
4928254

RLC COOPERSTOWN 131F  
LMG MISS 7284

	ProS	HB	GM	CED	BW	WW	YW	Milk	Stay	MB	REA
<b>EPD</b>	105	62	44	10	-0.6	72	120	28	16	0.23	0.01
<b>PCTL (%)</b>	48	33	69	74	74	29	21	26	33	92	73

**Dam's MPPA:** 102

**BW:** 89 lbs.

**WW:** 816 lbs.

Here's a herd bull built the way a stockman likes 'em — stout made, good footed, and bred to punch the scale down hard in the fall. His sire was sired by RED SSS CARSONCITY 710G, performance and maternal strength on both sides of his pedigree. His numbers read like a rancher's wish list — calving ease to sleep at night, growth to load the trucks heavy, and carcass merit with strong marbling and ribeye figures to keep the packer smiling. He's the kind that'll sire calves that press the scales and leave daughters you won't want to sell.

**Pen 104**



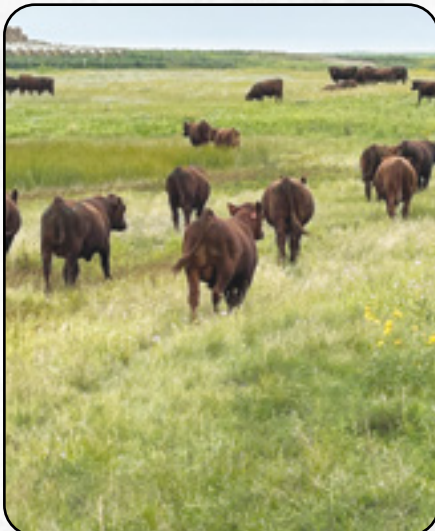
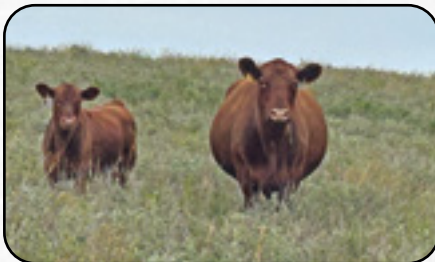
Larry and the commercial bred heifers



Gathering steers



Taking bulls back to pens after sorting for quality and disposition.



Sale bulls on grass in August



# Calving Ease Yearling Bulls

98



**LMG 5054**

03-03-2025 5183787 100% AR

BIEBER FOREFRONT K246  
4621275

BIEBER FOREFRONT B281  
BIEBER ADELLE 530F

LMG 3343  
4928100

BIEBER CL STOCKMAN E116  
LMG GILLS MISS 7338 1677

	ProS	HB	GM	CED	BW	WW	YW	Milk	Stay	MB	REA
EPD	112	74	38	16	-3.8	68	107	30	21	0.48	0.00
PCTL (%)	38	15	79	20	17	45	46	15	2	40	75

Dam's MPPA: 101

BW: 83 lbs.

WW: 802 lbs.

He posted an 802 lbs adjusted weaning showing performance from day one. His EPDs back real-world potential, including excellent calving ease with very low birth weight genetics, top growth, and strong maternal merit — traits that help produce productive daughters and consistent calves.

Pen 105

99



**LMG 5035**

02-24-2025 5183757 100% AR

BIEBER FOREFRONT K246  
4621275

BIEBER FOREFRONT B281  
BIEBER ADELLE 530F

LMG 3389  
4928186

WSM MERLIN 949G  
LMG MISS VERDALE

	ProS	HB	GM	CED	BW	WW	YW	Milk	Stay	MB	REA
EPD	103	51	52	16	-3.3	74	119	27	15	0.56	0.05
PCTL (%)	51	54	46	22	24	24	24	38	48	27	65

Dam's MPPA: 99

BW: 77 lbs.

WW: 773 lbs.

This guy has practical performance you can use in a commercial herd. His EPDs offer very good calving ease with solid growth and productive female potential — genetics that help put sound, market-ready calves on the ground and build a productive cowherd.

Pen 105



Lot 100

100



**VANWYE DYNASTY 5015**

03-15-2025 5131427 100% AR

BIEBER DYNASTY H524  
4308117

9 MILE FRANCHISE 6305  
BIEBER ROSE 520F

VANWYE MINOLA 302  
4955852

PELTON WIDELOAD 78B  
VANWYE MINOLA 008

	ProS	HB	GM	CED	BW	WW	YW	Milk	Stay	MB	REA
EPD	164	70	94	17	-3.8	76	125	32	17	1.01	0.21
PCTL (%)	2	20	2	14	17	17	16	5	28	1	33

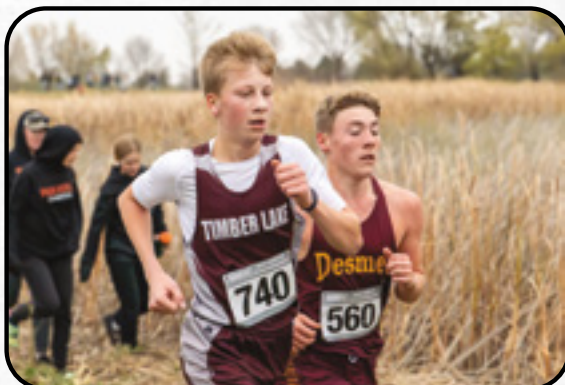
BW: 62 lbs.

WW: 715 lbs.

Dam's MPPA: 102

Check out this powerful calving ease son of Bieber Dynasty. This is the kind that will let you sleep at night while still selling a heavy calf at weaning.

Pen 105



Gracen at Cross Country State Meet



Holden holding the U.S. Flag

# GILL RED ANGUS



**Lot 101**

**102** **GILL CARSON CITY 5055**  
 03-08-2025 5183789 100% AR

KUHNS CARSON CITY K049 4678193  
 RED SSS CARSONCITY 710G  
 KUHNS ABIGAIL A036

LMG 3439 4928276  
 BIEBER SPARTACUS F129  
 LMG MISS 7317

	ProS	HB	GM	CED	BW	WW	YW	Milk	Stay	MB	REA
EPD	134	64	70	14	-2.3	72	120	25	16	0.67	0.05
PCTL (%)	15	29	16	33	41	31	22	61	30	15	65

**103** **GILL CARSON CITY 5057**  
 03-10-2025 5183793 100% AR

KUHNS CARSON CITY K049 4678193  
 RED SSS CARSONCITY 710G  
 KUHNS ABIGAIL A036

LMG 3421 4928242  
 BIEBER CL STOCKMAN E116  
 LMG MISS POTEET 9598

	ProS	HB	GM	CED	BW	WW	YW	Milk	Stay	MB	REA
EPD	125	75	50	14	-2.9	68	108	28	18	0.55	0.01
PCTL (%)	22	14	52	38	30	43	45	27	12	29	73



**Lot 104**

**101** **GILL QUARTERBACK 5001**  
 01-13-2025 5131413 100% AR

LACY MOV'N ON 417 063G 4237524  
 LACY LEGACY 6097 417  
 LACY MARIE 8190

VANWYE SARA KAY 611 3565758  
 RED BRYLOR RED KODIAK 3A  
 WOF SARA 043

	ProS	HB	GM	CED	BW	WW	YW	Milk	Stay	MB	REA
EPD	123	78	45	16	-5.3	65	96	30	19	0.69	0.11
PCTL (%)	25	12	65	18	5	54	70	14	10	13	53

BW: 72 lbs. WW: 635 lbs. Dam's MPPA: 101

Built for the real world: practical performance and rugged genetics that ranch buyers trust. He's backed by DNA-enhanced EPDs that deliver easy-calving potential, growth and pounds at weaning/yearling, and maternal strength that keeps daughters productive in the herd. He's bred to add value from pasture to pen — dependable, stout, and ready to work in a range of environments.  
 Pen 105

Dam's MPPA: 101

BW: 77 lbs.  
 WW: 807 lbs.

He hit the ground with practical performance — 786 lbs adjusted weaning weight and EPDs that combine good calving ease with growth and performance that'll put pounds on the ground, maternal strength for daughters that stay in your herd, and marbling that points to quality end product. Built rugged for the real world, ready to work.

Pen 105

Dam's MPPA: 100

BW: 83 lbs.  
 WW: 793 lbs.

Big enough to put pounds on the ground (90 lb weaning, 793 lb yearling), yet has the easy calving needed. Plus strong growth and maternal power means he'll leave productive daughters behind. Built tough, fertile, and practical — a bull that works from pasture to pen.

Pen 105

**104** **GILL STOCKYARD 5020**  
 01-08-2025 5183833 100% AR

LEM STOCKYARD 2001 ET 4659179  
 BIEBER CL STOCKMARKET E119  
 LEM ONEKIND 934 ET

PIE GERONIMO 1854 4542403  
 PIE GERONIMO 7021  
 PIE CHERI 4038

	ProS	HB	GM	CED	BW	WW	YW	Milk	Stay	MB	REA
EPD	140	95	45	21	-4.4	67	111	26	21	0.51	-0.17
PCTL (%)	11	2	67	2	11	47	39	47	3	35	94

BW: 70 lbs. WW: 734 lbs. Dam's MPPA: 99

This guy has it all from easy calving to growth and pounds on the ground, while he has maternal strength that will make his daughters stay in your herd. Built rugged and ready to work — a bull that adds calving ease, performance, and maternal all wrapped into one package.

Pen 105

**105** **GILL BLUEPRINT 5007**  
 02-07-2025 5131417 100% AR

RREDS BLUE PRINT H001 4287851  
 GLACIER CHATEAU 744  
 RREDS PRIMROSE F835

VANWYE PRINCESS ROSE 133 4726405  
 BIEBER SPARTACUS A193  
 DHX PRINCESS ROSE 190Z

	ProS	HB	GM	CED	BW	WW	YW	Milk	Stay	MB	REA
EPD	77	53	24	11	-2.5	59	86	28	14	0.19	0.21
PCTL (%)	86	49	94	69	37	78	86	24	62	95	33

Dam's MPPA: 97  
 BW: 64 lbs.  
 WW: 662 lbs.

This Blue Print son came in at a small 64 lbs while weaning off at 665 lbs. You get to watch all the ball games with this guy!

Pen 105

**106** **GILL LIKEABLE 5030**  
 03-04-2025 5183855 100% AR

HRP LIKABLE 1033J 4513565  
 BECKTON LIKABLE F425 E5  
 BROWN MS TRILOGY D727

PIE POLLY 331 4865948  
 BROWN CRSB CONFIDENCE G1410  
 PIE POLLY 1156

	ProS	HB	GM	CED	BW	WW	YW	Milk	Stay	MB	REA
EPD	112	27	85	18	-4.5	69	120	28	11	0.70	0.13
PCTL (%)	38	90	5	8	10	40	21	26	88	12	49

BW: 67 lbs.  
 WW: 706 lbs.

This guy is loaded deep with strong Red Angus bloodlines. He carries the kind of heritage that works in the real world genetics built on sound structure, longevity, and functional performance. He's stout-made through the top, square in the hip and wide in the chest, with correct feet and legs that keep him moving where the work's at. Developed for forage-friendly performance, this bull is bred to cover cows with confidence and leave daughters that stay in your herd year after year. Rugged, dependable, and built for the long haul, the kind you can set working from sunrise to sunset.

Pen 105

**107** **GILL COW BOSS 5002**  
 01-22-2025 5131411 100% AR

JACOBSON COW BOSS 1059 4529359  
 5L BOURNE 3456-10F  
 JACOBSON KIMA 9225

RE JACOBSON DOLLY 3219 4788018  
 BERWALD QUARTERBACK 121J  
 C PAURUS BLAZEN DOLLY 021

	ProS	HB	GM	CED	BW	WW	YW	Milk	Stay	MB	REA
EPD	79	24	55	18	-2.6	72	114	23	10	0.57	0.15
PCTL (%)	84	92	40	10	35	29	32	73	92	26	45

BW: 55 lbs. WW: 698 lbs. Dam's MPPA:

A pedigree full of performance built for the rancher. Weaned off at nearly 700 lbs. When you sell by the pound, every pound counts!

Pen 105



Green Bay Game



Spending time with our favorite Green Bay Packer - Tucker Kraft



Evy wrestling



Gracen's Confirmation



Kendyl's team won the tournament



Quadye's 10th Birthday Cake



Bryan's family at state cross country meet.



Typical Cayne - Always smiling

# Gill Red Angus Cows



## Sod. Soil. **SOLD!**<sup>sm</sup>



Whether farmland, pastureland or hunting land, we will visit about the various options for marketing your property to come up with the best approach to achieve your specific goals.

Contact **Kristen Gill** at **605-848-4502**  
**TODAY** for your free land value estimate.  
[kristen@glcland.com](mailto:kristen@glcland.com) • [www.glcland.com](http://www.glcland.com)





## BIEBER JUMPSTART J137

01-20-2021

4463653

**BIEBER CL ENERGIZE F121**  
3958815

BIEBER CL ATOMIC C218  
BIEBER CL ADELLE 575D

**BIEBER GALLEE 390G**  
4140526

GMRA TRINITY 5222  
BIEBER GALLEE 550D

	ProS	HB	GM	CED	BW	WW	YW	Milk	Stay	MB	REA
EPD	119	37	81	12	-1.0	89	151	31	14	0.56	0.14
PCTL (%)	32	71	11	61	63	5	3	13	65	30	45



BIEBER JUMPSTART J137



## PIE ASSET 1276

02-20-2021

4543565

**RED MRLA RESOURCE 137E**  
3897537

MRLA RELOAD 56C  
MRLA MISS 4422B

**PIE RUBY 520**  
350928

PIE ONE OF A KIND 352  
PIE RUBY 381

	ProS	HB	GM	CED	BW	WW	YW	Milk	Stay	MB	REA
EPD	101	28	73	6	2.4	76	142	27	12	0.18	0.03
PCTL (%)	51	83	18	94	96	24	6	41	76	90	64



PIE ASSET 1276



## BB PROPULSION 9096

03-15-2019

4169122

**PIE ONE OF A KIND 777**  
3838817

PIE ONE OF A KIND 352  
PIE JULY DALLES 569

**BB MS GINNIE 6256**  
3548862

LARSON SUN KING 016  
BB MS GINNIE 6019-2057

	ProS	HB	GM	CED	BW	WW	YW	Milk	Stay	MB	REA
EPD	112	53	59	11	-1.1	85	129	28	12	0.70	0.01
PCTL (%)	38	46	37	66	61	8	16	32	83	15	68



BB PROPULSION 9096



## WSM PLAYMAKER 1080J

03-06-2021

4468115

**PIE QUARTERBACK 789**  
3838837

PIE STOCKMAN 4051  
PIE RUBY 520

**BIEBER PRIMROSE 107W**  
1311339

BASIN HOBO 0545  
BASIN PRIMROSE 24T9

	ProS	HB	GM	CED	BW	WW	YW	Milk	Stay	MB	REA
EPD	101	28	73	7	1.2	86	149	27	16	0.71	0.29
PCTL (%)	51	83	18	90	90	7	4	36	34	14	24



WSM PLAYMAKER 1080J



## BIEBER DYNASTY H524

03-06-2020

4308117

9 MILE FRANCHISE 6305  
3555188

SPUR FRANCHISE OF GARTON  
C-BAR ABIGRACE Y11

BIEBER ROSE 520F  
3967353

BIEBER GLADIATOR C386  
BIEBER ROSE 475A

	ProS	HB	GM	CED	BW	WW	YW	Milk	Stay	MB	REA
EPD	193	82	111	18	-4.8	77	131	35	17	1.23	0.40
PCTL (%)	1	11	2	13	9	19	13	2	25	1	14



BIEBER DYNASTY H524



## BERWALD CONFIDENT 2044

1/27/22

4687927

BROWN CRSB CONFIDENCE G141  
405210

CONNEALY CONFIDENCE PLUS  
BROWN MS MISSION STMT B542

BERWALD JAYLO 0007  
4394223

PIE QUARTERBACK 789  
JEFFRIES MS JOLINE Z243

	ProS	HB	GM	CED	BW	WW	YW	Milk	Stay	MB	REA
EPD	93	-1	93	15	-3.0	94	148	32	9	0.83	0.53
PCTL (%)	61	97	5	32	29	2	4	8	94	7	7



BERWALD CONFIDENT 2044



## BERWALD PVF OUTRIGHT 221L

1/17/23

4723623

KJL/CLZB COMPLETE 7000E  
3796236

LEACHMAN PLEDGE A282Z  
HXC 507C

BERWALD ABIGRACE 1110J  
4596515

PIE QUARTERBACK 789  
BER ABIGRACE 1322

	ProS	HB	GM	CED	BW	WW	YW	Milk	Stay	MB	REA
EPD	129	32	97	13	-2.7	76	133	27	11	0.75	0.32
PCTL (%)	21	78	4	47	34	24	12	43	87	11	21



BERWALD PVF OUTRIGHT 221L



## LEM STOCKYARD 2001 ET

1/15/22

4659179

BIEBER CL STOCKMARKET E119  
3751659

LSF SAGA 1040Y  
PIE LAKOTA 046

BIEBER CL ADELLE 475C  
3474411

ANDRAS FUSION R236  
BIEBER ADELLE 297Y

	ProS	HB	GM	CED	BW	WW	YW	Milk	Stay	MB	REA
EPD	137	59	78	19	-5.2	74	123	23	14	0.86	-0.07
PCTL (%)	16	37	14	8	7	28	22	75	59	6	80



LEM STOCKYARD 2001 ET



## EGL GUIDANCE 9117

03-12-2019

4208972

**MCD SPUR 6111**  
3756377

SPUR FRANCHISE OF GART  
MCD-2 RITOESS 3155

**AHL DUCHESS 427B**  
1731204

BROWN JYJ REDEMPTION Y1334  
AHL DUCHESS 9U

	ProS	HB	GM	CED	BW	WW	YW	Milk	Stay	MB	REA
EPD	120	39	81	14	-2.5	60	105	11	8	0.54	-0.16
PCTL (%)	30	69	11	40	37	75	56	99	96	33	90



EGL GUIDANCE 9117



## RREDS BLUE PRINT H001

1/9/20

4287851

**GLACIER CHATEAU 744**  
557331

LMAN KING ROB 8621  
GLACIER REBAL

**RREDS PRIMROSE F835**  
3952843

RREDS SENECA 731C  
STRA PRIMROSE 5

	ProS	HB	GM	CED	BW	WW	YW	Milk	Stay	MB	REA
EPD	83	66	17	17	-5.1	61	91	32	14	0.05	0.57
PCTL (%)	72	27	94	18	7	72	80	8	61	97	6



RREDS BLUE PRINT H001



## HRP RAISLAND QUARTERBAK 2704

1/18/22

4637595

**PIE QUARTERBACK 789**  
3838837

PIE STOCKMAN 4051  
PIE RUBY 520

**RAISLAND REBELLA 810-630**  
3941047

9 MILE FRANCHISE 630  
RAISLAND REBELLA 630-826

	ProS	HB	GM	CED	BW	WW	YW	Milk	Stay	MB	REA
EPD	85	22	63	7	0.3	83	141	30	12	0.49	0.23
PCTL (%)	69	87	31	91	81	10	7	16	83	40	31



HRP RAISLAND QUARTERBAK 2704



## EGL HOMELAND 0087

02-02-2020

4373599

**SCHULER SUPREMACY 7177E**  
3778501

5L BOURNE 670-111C  
SOR KARVE ENDRANCE 4205B

**EGL DUCHESS 8007**  
4075090

SPUR FRANCHISE OF GARTON  
AHL DUCHESS 42W

	ProS	HB	GM	CED	BW	WW	YW	Milk	Stay	MB	REA
EPD	90	36	54	13	-2.2	60	92	23	12	0.47	0.22
PCTL (%)	64	74	44	51	42	75	79	75	83	44	33



EGL HOMELAND 0087



**PIE CAPTAIN 057**  
01-29-2020

4388923

**PIE QUARTERBACK 789**  
3838837

PIE STOCKMAN 4051  
PIE RUBY 520

**PIE BONNE BEL 852**  
4047358

9 MILE FRANCHISE 6305  
PIE BONNE BEL 6232

	ProS	HB	GM	CED	BW	WW	YW	Milk	Stay	MB	REA
EPD	114	68	46	15	-5.1	67	115	40	16	0.44	0.33
PCTL (%)	37	25	58	35	7	52	36	1	38	49	20



PIE CAPTAIN 057



**PIE PROSPERITY 1235**  
2/15/21

4542591

**KJL/CLZB COMPLETE 7000E**  
3796236

LEACHMAN PLEDGE A282Z  
HXC 507C

**MS RAMBO TUO 5318**  
3503584

LSF SAND HILLS 9008W  
PIE MS RAMBO TUO 0198

	ProS	HB	GM	CED	BW	WW	YW	Milk	Stay	MB	REA
EPD	123	34	88	16	-3.0	88	157	24	14	0.71	0.07
PCTL (%)	28	76	7	23	29	5	2	67	65	14	58



PIE PROSPERITY 1235



**KUHNS CARSON CITY K049**  
02-25-2022

4678193

**RED SSS CARSONCITY 710G**  
4269983

RED MRLA RESOURCE 137E  
RED SSS WAYCOE 183B

**KUHNS ABIGAIL A036**  
1617823

LARSON JUBILEE 155  
KUHNS BOND GIRL X060

	ProS	HB	GM	CED	BW	WW	YW	Milk	Stay	MB	REA
EPD	139	74	65	12	-1.2	69	122	25	17	0.48	-0.10
PCTL (%)	14	18	28	56	60	44	25	58	28	42	84



**LMG GILLS SPARTACUS 1036**  
1/1/21

4566263

**BIEBER SPARTACUS A193**  
1617230

BIEBER ROUSE SAMURAI X22  
BIEBER TILLY 233U

**DHX MAGGIE ROSE 241F**  
3856911

RED DOUBLE B BULLSEYE 1B  
DHX MULBERRY ROSE 197A

	ProS	HB	GM	CED	BW	WW	YW	Milk	Stay	MB	REA
EPD	86	35	51	11	-1.1	76	117	23	14	0.43	0.08
PCTL (%)	68	74	49	68	61	24	33	72	61	51	56



**PIE QUARTERBACK 1152**  
2/9/21

4543235

**PIE QUARTERBACK 789**  
3838837

PIE STOCKMAN 4051  
PIE RUBY 520

**4MC MAID EASY 857**  
3994504

9 MILE FRANCHISE 6305  
5L AMY L293-319

	ProS	HB	GM	CED	BW	WW	YW	Milk	Stay	MB	REA
EPD	121	35	86	10	-2.8	64	112	34	12	0.73	0.07
PCTL (%)	30	75	8	74	33	63	40	5	83	13	58



**BIEBER FLASHDRIVE G266**  
2/14/19

4140008

**BIEBER HARD DRIVE E640**  
3762929

BIEBER HARD DRIVE Y120  
BIEBER LASS 241Y

**BIEBER FLOWER 312E**  
3752425

BIEBER FOREFRONT B281  
BIEBER FLOWER 124A

	ProS	HB	GM	CED	BW	WW	YW	Milk	Stay	MB	REA
EPD	153	49	104	6	3.5	101	163	25	17	0.98	0.71
PCTL (%)	8	54	3	93	99	1	1	55	23	3	3



## VGW AMAZING 117

1-31-2021

4428721

**BIEBER CL ATOMIC C218**  
3474996

ANDRAS FUSION R236  
BIEBER DATELINE 308Y

**VGW MT-STAR 1971**  
4142480

JACOBSON MOUTAINEER 5076  
VGV HS-STAR 1549

	ProS	HB	GM	CED	BW	WW	YW	Milk	Stay	MB	REA
EPD	119	37	81	12	-1.0	89	151	31	14	0.56	0.14
PCTL (%)	32	71	11	61	63	5	3	13	65	30	45



## BIEBER FOREFRONT K246

1-14-2018

4621275

**BIEBER FOREFRONT B281**  
1687449

ANDRAS FUSION R236  
BIEBER LAURA 112W

**BIEBER ADELLE 530F**  
3966301

BIEBER SPARTACUS A193  
BIEBER ADELLE 311Y

	ProS	HB	GM	CED	BW	WW	YW	Milk	Stay	MB	REA
EPD	130	58	72	16	-4.0	69	114	28	19	0.74	0.08
PCTL (%)	21	39	19	26	16	44	39	32	13	12	56



## HRP LIKABLE 1033J

3/29/21

4513565

**BECKTON LIKABLE F425 E5**  
3987594

BECKTON LIKABLE Z057 L4  
BECKTON LARKABA W050 E

**BROWN MS TRILOGY D727**  
3593354

GMRA TRILOGY 0226  
BROWN MS ABIGRACE L7730

	ProS	HB	GM	CED	BW	WW	YW	Milk	Stay	MB	REA
EPD	102	23	79	19	-4.6	59	110	31	11	0.58	-0.04
PCTL (%)	49	87	13	8	11	78	46	12	88	27	76



## BIEBER ENERGIZE K285

02-26-2022

4621091

**BIEBER CL ENERGIZE F121**  
3958815

BIEBER CL ATOMIC C218  
BIEBER CL ADELLE 575D

**BIEBER SURPRISE 515E**  
3761711

BIEBER GLADIATOR C386  
BIEBER SURPRISE 278X

	ProS	HB	GM	CED	BW	WW	YW	Milk	Stay	MB	REA
EPD	71	27	45	13	-3.3	70	113	29	12	0.38	-0.10
PCTL (%)	82	84	59	45	25	40	40	27	80	60	84



## GILL STOCKMAN 0056

9/13/20

4482365

**BIEBER CL STOCKMAN E116**  
3751653

PIE STOCKMAN 4051  
BIEBER CL DATELINE 115C

**VANWYE OLIVE 737**  
4079392

ANDRAS NEW DIRECTION R240  
VANWYE OLIVE 609

	ProS	HB	GM	CED	BW	WW	YW	Milk	Stay	MB	REA
EPD	117	66	51	16	-3.1	54	95	27	18	0.43	-0.34
PCTL (%)	34	28	49	26	28	88	75	42	13	51	98



## RED SSS ARSON 85U

2/10/08

2223267

**RED SSS ARSENAL 271S**  
2134272

5L NORSEMAN KING 2291  
SSS DYLAN'S VALENTINE

**RED SSS SCAARA 951L**  
1833863

SSS TRAVELER 362J  
RED SSS SCAARA 16H

	ProS	HB	GM	CED	BW	WW	YW	Milk	Stay	MB	REA
EPD	83	10	73	7	1.5	67	109	22	11	0.60	0.22
PCTL (%)	72	94	19	92	92	52	47	82	89	25	33



*See You at the Ranch on April 22!*

## View the Auction Live! Bid Online... you're ringside right at your desk!

Buying online is as easy as 1, 2, 3...

1. Create an account at [www.DVAuction.com](http://www.DVAuction.com) under the "Register" tab
2. Apply for bidding approval by clicking on the "details" tab at least 24 hours prior to the auction — a DV representative will notify you once you have been approved.
3. Tune in for the sale to make your purchases!

High Speed internet is required for successful bidding-be sure to check the log-time monitor in the top left corner to ensure real-time broadcasts.

Proxy-bidding — if you can't make time to watch the sale, register a proxy bid and let our system represent your bid while you're away. Look for the "proxy bid" tab on the auction listing, and fill in your maximum bids. We'll handle the rest!

For General Questions Please contact Our Office: 402-316-5460 or [support@dvauction.com](mailto:support@dvauction.com)



**DVAuction**  
Broadcasting Real-Time Auctions

# Red Angus Guide to EPDS and Indexes

**ProS**... Profitability and Sustainability is an all-purpose index that predicts average economic differences in all segments in the beef supply chain. This index is a combination of the breeding objectives modeled in the HerdBuilder and GridMaster selection indexes. In this index, replacement heifers are retained from within the herd and all remaining progeny are fed out to slaughter and sold on a quality-based grid. Traits included in this index include calving ease, growth, HPG, STAY, Mature Weight, Dry Matter Intake and carcass traits. The resulting index is expressed in dollars per head born (Index/High Value).

**HB**..... HerdBuilder is a maternal selection index that predicts the economic differences of animals for traits that are important from conception through weaning. Expressed as dollars per head born, HB is calculated based on the scenario that bulls are mated to heifers and cows, replacement heifers are retained and all remaining progeny are marketed at weaning. Traits included in the HB index include Calving Ease Direct, Calving Ease Maternal, Weaning Weight, Milk, Mature Weight, Heifer Pregnancy and Stayability (Index/High Value).

**GM**..... GridMaster is a selection index that predicts the average economic difference of non-replacement calves through the post-weaning phase of production. GM places selection pressure on growth, feedyard performance and carcass traits. Expressed as dollars per head born, GM is calculated based on the scenario that progeny are fed out to slaughter and marketed on a quality-based carcass grid. Traits included in GM include Average Daily Gain, Carcass Weight, Dry Matter Intake, Marbling, Back Fat and Rib Eye Area (Index/High Value).

**CED**..... Calving Ease Direct predicts differences in the percent of calves born unassisted out of 2-year-old dams. (Percent/High Value)

**BW**..... Birth Weight predicts differences in actual birth weight of progeny. (Pounds/Low Value)

**WW**..... Weaning Weight predicts differences in 205-day weaning weight. (Pounds/High Value)

**YW**..... Yearling Weight predicts differences in 365-day yearling weight. (Pounds/High Value)

**ADG**..... Average Daily Gain predicts differences in weight gain between 205 and 365 days of age. (Pounds/High Value)

**DMI**..... Dry Matter Intake predicts differences in daily feed intake as measured in a feedlot during the post-weaning period. (Pounds/Low Value)

**MILK**..... Milk predicts differences in weaning weight attributed to the milking ability of the animal's daughters. (Pounds/High Value)

**ME**..... Maintenance Energy predicts the difference in maintenance energy requirements. (Mcal per Month/Low Value)

**HPG**..... Heifer Pregnancy predicts differences in the percent of daughters who are able to conceive and calve at 2 years of age following exposure to breeding. (Percent/High Value)

**CEM**..... Calving Ease Maternal predicts differences in the percent of daughters who are able to calve unassisted as 2-year-old heifers. (Percent/High Value)

**STAY**..... Stayability predicts differences in the ability of an animals' retained daughters to remain productive in the herd – calve every year – through 6 years of age. (Percent/High Value)

**MARB**..... Marbling predicts differences in marbling score – amount of intramuscular fat measured at the 13th rib. (Marbling Score Units/High Value)

**YG**..... Yield Grade predicts differences in USDA Yield Grade, which is calculated using CW, REA and Fat. (Yield Grade Units/Low Value)

**CW**..... Carcass Weight predicts differences in actual hot carcass weight. (Pounds/High Value)

**REA**..... Ribeye Area predicts differences in square inches of ribeye area measured at the 13th rib. (Square Inches/High Value)

**FAT**..... Fat predicts differences in the depth of backfat measured between the 12th and 13th ribs. (Inches/Low Value)

**RE ANGUS**  
RANCH TESTED. RANCHER TRUSTED.  
[RedAngus.org](http://RedAngus.org)





**Mobridge Livestock is dedicated to the Red Angus breed. We are the only auction barn in the country to offer a solely Red Angus calf sale. In addition, we market more Red Angus and Red Angus cross calves than any other auction barn in the United States.**



**Sale Barn:**

**1-800-658-3598 or (605) 845-3622**

PO Box 190 • Mobridge, SD 57601

**Owners:**

Jason Anderberg: (605) 848-0038 & (605) 845-5440

Tigh Anderberg: (605) 845-4877 & (605) 845-3584

Casey Perman: (605) 848-3338 & (605) 762-3305

**Fieldmen:**

Tom Anderberg: (605) 845-6200 & (605) 845-3702

John Hoven: (605) 848-3507 & (605) 823-2404

Cole Mettler: (605) 519-1683

**See our sales live and BID online! Go to: [www.cattleusa.com](http://www.cattleusa.com)**

*The cattle market large enough to handle all your cattle marketing needs, yet small enough to appreciate it!*

# To all of our Customers...



Marshall Ranch



Circle S Ranch



Sandquist Ranch



Chance Knutson Ranch



Newling Ranch



Metzinger Ranch



Stradinger Ranch



Dean Churchill Ranch



Collins Ranch



Nemeck Ranch



Slecht Ranch



Randy Kahl Ranch



Hollibaugh Ranch



Wannier Ranch

# Thank you!

# To all of our Customers...



Gran Ranch



Robert & Eric Jones Ranch



Gropper Ranch



Andrews Ranch



Archie Hulm



Cody Hooper Ranch



Prince Ranch



Bruce Ranch



Shawn Claymore Ranch



Terry Henderson Ranch



Burruss Ranch



Tucker Amiotte Ranch



Jerry Nelson Ranch



Senn Ranch



Suchy Ranch



Hollenbeck Ranch



Jose Campos Ranch



Dusty Jackson



Duane Frank Ranch



Webb Ranch



Gropper Ranch



Shane Sweet Ranch



Lawrence Ranch



Nagel Ranch



Brian Andres Ranch



Marks Ranch



Tim Braun Ranch



Weigel Ranch

*Thank You!*



**GILL RED ANGUS**  
13138 256th Ave.  
Timber Lake, SD 57656



Lot 13



Lot 19



Lot 33



Lot 51



Lot 56



**Commercial Open  
Replacement Heifers**



*Spring Bull & Female Sale*  
**APRIL 22, 2026**

1:00 PM MT At the Ranch Near Timber Lake, SD

[www.GillRedAngus.com](http://www.GillRedAngus.com)